



CHILD PROTECTION AND SAFEGUARDING POLICY

Child Protection and Safeguarding Policy

Kingsbury Academy
September 2020

Policy last reviewed: 1st September 2020

Reviewed by: Susannah Roberts, 1st September 2020

Agreed by governors: (date)

Shared with staff: 2nd September 2020

Frequency of review: Annually

Date of next review: 1st September 2021

Head Teacher: Susannah Roberts (Interim)

Designated Safeguarding Lead: Susannah Roberts, Interim Head Teacher

Deputy Designated Safeguarding Lead: Suzanne Everitt, Assistant Head Teacher

Named Governor for Safeguarding: Sean Byrne

Chair of Governors: (Name and contact details)

Vice Chair of Governors: (Name and contact details)

Local Authority designated officer: Mark Goddard

Telephone number: **0247 697 8499**

Designated Lead for Looked After and Previously Looked-After Children:

Susannah Roberts

Table of Contents

1	Definitions	4
2	Introduction.....	4
3	Roles and Responsibilities	6
4	Types of abuse.....	11
5	Responding to signs of abuse	16
6	Record-keeping	22
7	Photography and Images.....	22
8	Early Help.....	23
9	Staff training	23
10	Safer Recruitment	23
11	Allegations of abuse against staff.....	24
12	Promoting safeguarding and welfare in the curriculum.....	25
13	Children Looked After	26
14	Children with Special Educational Needs	26
15	Use of reasonable force	27
16	Summary	27
	Appendix A	28
	Appendix B – Further Safeguarding Information.....	29
	Addendum A- Covid	33

1 Definitions

1.1 'Safeguarding' is defined in **Keeping Children Safe in Education (2020)** as;

- protecting children from maltreatment;
- preventing impairment of children's mental health or development;
- ensuring that children grow up in circumstances consistent with the provision of safe and effective care; and
- taking action to enable all children to have the best outcomes.

1.2 'Child Protection' is the intervention that occurs when children have been significantly harmed or are at risk of significant harm.

1.3 'Child' refers to everyone under the age of 18.

1.4 'Parent' refers to birth parents and other adults in a parenting role for example adoptive parents, step parents and foster carers.

1.5 'Staff' or 'members of staff' refers to all teaching, non-teaching, support, supply, peripatetic, contract staff, governors, volunteers and trustees working in or on behalf of Kingsbury Academy.

2 Introduction

2.1 We recognise that safeguarding and child protection is an essential part of our duty of care to all students and all staff have a responsibility to provide a safe environment in which children can learn. We understand that safeguarding, child protection and promoting the welfare of all children is everyone's responsibility and everyone has a role to play in protecting children. We recognise that our school is part of a wider safeguarding system for children and work closely with other agencies to promote the welfare of children. We maintain an attitude of 'it could happen here' and will consider the wishes of, and at all times, what is in the best interests of each child.

2.2 The purpose of this policy is to;

- Promote safeguarding and child protection and to demonstrate Kingsbury Academy's commitment to keeping children safe;
- Provide all members of staff with the information required to meet their safeguarding duty and protect children from harm;
- Provide stakeholders with clear information relating to Kingsbury's Academy safeguarding and child protection procedures;
- Ensure that staff understand, can recognise and can respond to the indicators of abuse;
- Ensure that all staff are aware of their mandatory reporting duty in relation to Section 5B of the Female Genital Mutilation Act 2003; and
- Ensure that children are protected from maltreatment or harm.

2.3 Kingsbury Academy is committed to the following principles;

- All children have the right to be protected from harm.
- Children should feel safe and secure and cannot learn unless they do so.

- All staff are responsible for keeping children safe and have a responsibility to act if they think a child is at risk of harm.
- Working with other agencies is essential to promote safeguarding and protect children from harm.
- Early help and providing support to families and/or children as soon as a problem emerges is essential to improving outcomes for children and families.

2.4 Safeguarding aims

2.4.1 The safeguarding aims of Kingsbury Academy, in line with Keeping Children Safe in Education (**September 2020**) are to;

- work to identify children who are suffering or likely to suffer harm or abuse and act to protect them;
- work with relevant services and agencies to ensure that children are protected from harm;
- provide a learning environment for children which is safe and secure;
- teach children how to keep themselves safe and provide structures for them to raise concerns if they are worried or at risk of harm;
- support children's mental health and wellbeing;
- ensure that we adhere to safer recruitment guidance and legislation, deal promptly with allegations of abuse against staff and take bullying and harassment seriously;
- train staff effectively in all safeguarding issues and in their responsibilities for identifying and protecting children that are or may be at risk of harm;
- recognise that all children may be vulnerable to abuse, but be aware that some children have increased vulnerabilities due to special educational needs or disabilities;
- maintain a robust recording system for any safeguarding or child protection information;
- ensure that everyone in Kingsbury Academy understands the safeguarding procedures; and to
- regularly review policies and procedures to ensure that children are protected to the best of our ability.

2.5 This policy adheres to the following documents;

- Keeping Children Safe in Education (2020)
- [Working Together to Safeguard Children \(June 2018\)*](#)
- [Guidance for Safer Working Practice for those working with children and young people in education settings \(May 2019\)](#)
- [Guidance for Safer Working Practice for those working with children and young people in education settings addendum \(April 2020\)](#)
- [What to do if you are worried a child is being abused: Advice for practitioners \(2015\)](#)

[2.6 The school operates under all current government guidance relating to Covid-19 and reviews this regularly. For further details please see Appendix C](#)
[2.7 Keeping Children Safe in Education remains in force throughout the Covid-19 emergency period. In addition, we have regard to non-statutory interim guidance on safeguarding schools, colleges and other providers during the coronavirus outbreak. We continue to work closely with the Local Authority and the Coventry Safeguarding Children Partnership to safeguard children during this time.](#)

Please note that there are several other documents (statutory and non-statutory) that inform our policy and practice. A list of these can be found in Annex A of Keeping Children Safe in Education (**September 2020**).

This policy should be read in conjunction with the following policies; behaviour policy, anti-bullying policy, online safety, the code of conduct and safer working practice, intimate care policy,

2.8 Scope

2.8.1 This policy applies to all teaching, non-teaching, support, supply, peripatetic, contract staff, governors, volunteers and trustees working in or on behalf of Kingsbury Academy. All references in this document to 'staff' or 'members of staff' should be interpreted as relating to the aforementioned unless otherwise stated.

2.8.2 Rather than duplicating content from Keeping Children Safe in Education (September 2020) in this policy, it should be understood that Kingsbury Academy will always refer to this document as the benchmark for all safeguarding practice.

3 Roles and Responsibilities

3.1 The Role of the Governing Body and Trustees

3.1.1 The Board of Trustees, proprietors and management committees are the accountable body and must ensure that they comply with their duties under legislation – Children Act 1989 and 2004, Working Together 2018, KCSIE 2020, Education Act 1975. A Local Governing Body is in place at Kingsbury Academy also. Part 2 of Keeping Children Safe in Education (September 2020) sets out the responsibilities of governing bodies. As part of these overarching responsibilities the Governing Body and Trustees will;

- Ensure that they comply with their duties under legislation;
- Ensure that policies, procedure and training in Kingsbury Academy are effective and comply with the law at all times and that they allow concerns to be responded to in a timely manner;
- Ensure that Kingsbury Academy takes into account local authority and Coventry Safeguarding Children Partnership policies and supply information as requested by the three safeguarding partners (the Local Authority, a clinical commissioning group for an area within the local

authority and the chief office of police for a police area within the local authority);

- Ensure that Kingsbury Academy has an effective child protection policy, that it is published on Kingsbury Academy website or available by other means and review this annually;
- Ensure that Kingsbury Academy has a staff behaviour policy or Code of Conduct;
- Ensure that all staff undergo safeguarding and child protection training on induction;
- Consider a whole-school approach to online safety, including the use of mobile technology in school;
- Ensure that there are clear systems and processes in place for identifying when children may be experiencing mental health problems;
- Ensure that children are taught about safeguarding, including online safety. See section 12 of this policy for further information;
- Put in place appropriate safeguarding responses for children who go missing from education;
- Appoint an appropriate member of staff from the senior leadership team to the role of Designated Safeguarding Lead;
- Ensure that appropriate filters and monitoring systems are in place to keep children safe online; and
- Respond to allegations of abuse against the headteacher.

3.2 The Role of the Headteacher

3.2.1 The headteacher will;

- Ensure that this policy is reviewed annually and ratified by the governing body;
- Ensure that this policy and associated procedures are adhered to by all staff;
- Ensure that all staff are made aware of the named governor for safeguarding and the Designated Safeguarding Lead;
- Ensure that the role of 'Designated Safeguarding Lead' is explicit in the role-holder's job description;
- Decide whether to have one or more deputy safeguarding leads and ensure they are trained to the same standard as the Designated Safeguarding Lead;
- Organise appropriate cover for the role of Designated Safeguarding Lead for any out of hour/out of term activities;
- Appoint a 'Designated Teacher for Looked-After and Previously Looked-After Children' to promote the educational achievement of children looked after;
- Appoint a lead for online safety;

- Ensure that all recruitment follows the 'Safer Recruitment' guidance and a single, central record is maintained with details of all members of staff who are in contact with children;
- Respond to allegations of abuse against all other members of staff;
- Refer cases where a person is dismissed or left due to risk/harm to a child to the Disclosure and Barring Service as required;
- Ensure that the school works with social care, the police, health services and other services to; promote the welfare of children; provide a co-ordinated offer of early help when need is identified; contribute to inter-agency plans for children subject to children protection plans and to protect children from harm.
- Safeguard children's wellbeing and maintain public trust in the teaching profession as part of their professional duties (Teaching Standards, 2012); and
- Ensure that children's social care (from the host local authority or placing authority) have access to Kingsbury Academy to conduct, or to consider whether to conduct a section 47 or section 17 assessment, as per Keeping Children Safe in Education (September 2020).

3.3 The Role of the Designated Safeguarding Lead

3.3.1 The Designated Safeguarding Lead for Kingsbury Academy is Susannah Roberts. The Designated Safeguarding Lead will;

- Take overall lead responsibility for safeguarding and child protection in Kingsbury Academy
- Act as a source of support and expertise on matters relating to safeguarding and child protection to ensure that other members of staff can carry out their safeguarding duty;
- Be best placed to advise on the response to safeguarding concerns;
- Liaise with the Local Authority and work with other agencies in line with 'Working Together to Safeguard Children (2018);
- Identify if children may benefit from early help;
- Make referrals to Coventry's Multi-Agency Safeguarding Hub (MASH) where children are at risk of significant harm.
- Make referrals to the Channel programme where there is a radicalisation concern and/or support staff that make a referral to Channel;
- Support the school with regards to their responsibilities under the Prevent duty and provide advice and support on protecting children from radicalisation;
- Refer cases to the police where a crime may have been committed¹;
- Be available during school or college hours for staff to discuss any safeguarding concerns. In the event that they are not available, a deputy will be made available;

¹ The school will have regard to ['When to call the police'](#) guidance from the National Police Chief's Council.

- Undertake training to equip them with the skills to carry out the role and update this every two years;
- Ensure all staff have read and understood Part 1 and Annex A of Keeping Children Safe in Education (September 2020);
- Update their knowledge and skills regularly and keep up with any developments relevant to their role;
- Provide staff in school with the knowledge, skills and support required to safeguard children;
- Take responsibility for the accurate and timely recording of safeguarding and child protection concerns and take overall responsibility for safeguarding and child protection files;
- Take responsibility for the transfer of safeguarding files when a child leaves Kingsbury Academy;
- Attend or ensure an appropriate representative attends multi-agency safeguarding or child protection meetings;
- Work closely with other relevant education professionals (e.g. SENCO, Virtual School Head) to ensure children with additional vulnerabilities are safeguarded;
- Help to promote educational outcomes of child who have experienced or are experiencing safeguarding or child protection issues by sharing relevant information with teachers and the school leadership team;
- Promote a 'culture of safeguarding', in which every member of Kingsbury Academy community acts in the best interests of the child;
- Regularly meet with the safeguarding link governor and/or Chair of Governors to review safeguarding in Kingsbury Academy and
- Liaise with the headteacher regarding safeguarding cases and issues.

3.3.2 Further details on the role of the Designated Safeguarding Lead can be found in Annex B of Keeping Children Safe in Education (September 2020).

3.4 The Role & Responsibilities of all Staff within School

3.4.1 School staff play a particularly important role because they are in a position to identify concerns early in order to provide help for children. All staff in Kingsbury Academy;

- Have a responsibility to provide a safe environment, where children can learn;
- Should know what to do if a child tells them that he/she is being abused or neglected;
- Will be able to identify indicators of abuse;
- Will be made aware of; the safeguarding and child protection policy; the school behaviour policy; the staff behaviour policy; information about the safeguarding response to children missing in education; the role of

the designated safeguarding lead and systems in Kingsbury Academy that support safeguarding and child protection;

- Will be provided with a copy of Part 1 of Keeping Children Safe in Education (September 2020) annually and receive annually updated training on their safeguarding roles and responsibilities;
- Should have an awareness of safeguarding issues that put children at risk of harm and behaviours associated with these risks;
- Should know what to do if a child makes a disclosure of abuse and never promise confidentiality when a child makes a disclosure;
- Will be made aware of the early help process and understand their role in it;
- Should be prepared to identify children who may benefit from early help and will discuss early help requirements with the safeguarding lead in the first instance;
- May be required to support social workers and other agencies following a referral;
- Will be made aware of the process for making referrals to Children's Social Care (through the MASH), understand statutory assessments and the role that they may be expected to play in such assessments;
- Should be prepared to make referrals to the MASH if they have concerns about a child's welfare and understand the role that they may be expected to play in such assessments;
- Will receive regularly updated safeguarding and child protection training;
- Will receive safeguarding updates throughout the year as part of continuous professional development;
- Should be able to contribute to the development of safeguarding policy and practice.
- Should always seek advice from the Designated Safeguarding Lead if they are unsure; and
- All teachers should safeguard children's wellbeing and maintain public trust in the teaching profession as part of their professional duties (Teaching Standards, 2012).

3.5 Multi-Agency Working

3.5.1 The school is committed to multi-agency working and operates under Working Together to Safeguard Children (2018) and local safeguarding arrangements.

3.5.2 The school will work with social care, the police, health services, local Early Help practitioners and other relevant agencies to promote the welfare of children and protect them from harm.

3.5.3 We work closely with our local Family Hub to ensure children receive appropriate, co-ordinated Early Help. Our Family Hub is Pathways Family Hub, 02476788444 and our early help coordinator is Jeanette Walsh 024 76 977 991

3.5.4 The Coventry Safeguarding Children Partnership (CSCP) have designated that schools and colleges are a named 'relevant agency'. As such, the school is under a statutory duty to co-operate with published CSCP arrangements.

4 Types of abuse

4.1 As outlined above, all staff will be trained in indicators of abuse and should be able to recognise signs of abuse. We recognise that abuse, neglect and safeguarding issues are complex and can rarely be covered by one label. Abuse can take many forms and can involve directly inflicting harm on a child, or failing to protect a child from harm. The four main types of abuse that staff are trained to recognise are;

- Physical abuse;
- Sexual abuse;
- Emotional abuse;
- Neglect.

4.2 Types of abuse (Taken from Working Together to Safeguard Children, 2018)

Type of abuse	Information
Abuse	A form of maltreatment of a child. Somebody may abuse or neglect a child by inflicting harm, or by failing to act to prevent harm. Children may be abused in a family or in an institutional or community setting by those known to them or, more rarely, by others. Abuse can take place wholly online, or technology may be used to facilitate offline abuse. Children may be abused by an adult or adults, or another child or children.
Physical abuse	A form of abuse which may involve hitting, shaking, throwing, poisoning, burning or scalding, drowning, suffocating or otherwise causing physical harm to a child. Physical harm may also be caused when a parent or carer fabricates the symptoms of, or deliberately induces, illness in a child.
Emotional abuse	The persistent emotional maltreatment of a child such as to cause severe and persistent adverse effects on the child's emotional development. It may involve conveying to a child that they are worthless or unloved, inadequate, or valued only insofar as they meet the needs of another person. It may include not giving the child opportunities to express their views, deliberately silencing them or 'making fun' of what they say or how they communicate. It may feature age

Type of abuse	Information
	<p>The victim may have been sexually exploited even if the sexual activity appears consensual. Child sexual exploitation does not always involve physical contact; it can also occur through the use of technology.</p> <p>Further information about Child Sexual Exploitation can be found in paragraph 28 of Keeping Children Safe in Education 2020.</p>
Neglect	<p>The persistent failure to meet a child's basic physical and/or psychological needs, likely to result in the serious impairment of the child's health or development. Neglect may occur during pregnancy, for example, as a result of maternal substance abuse. Once a child is born, neglect may involve a parent or carer failing to: provide adequate food, clothing and shelter (including exclusion from home or abandonment); protect a child from physical and emotional harm or danger; ensure adequate supervision (including the use of inadequate care-givers); or ensure access to appropriate medical care or treatment. It may also include neglect of, or unresponsiveness to, a child's basic emotional needs.</p>

4.3 Indicators of abuse can be found in Appendix B.

4.4 If a child is in immediate danger or at risk of harm, a referral will be made to children's social care (through the MASH) and any member of staff can make this referral. A Designated or Deputy Designated Safeguarding Lead should be available at all times, but in exceptional circumstances the member of staff should speak to a member of the Senior Leadership Team or seek advice directly from social care and then take appropriate action. The Designated Safeguarding Lead should be made aware as soon as possible.

4.5 Staff, parents and the wider community should report any concerns that they have about the welfare of children, however minor or seemingly insignificant. Staff should not assume that someone else will report concerns.

4.6 The school recognises that any child can be the victim of abuse and may benefit from early help. However, the school will be particularly vigilant to potential need for early help if a child;

- is disabled and have specific additional needs;
- has special educational needs (whether or not they have a statutory education, health and care plan);
- is a young carer;
- is showing signs of being drawn in to anti-social or criminal behaviour, including gang involvement and association with organised crime groups;
- is frequently missing/goes missing from care or from home;
- is misusing drugs or alcohol themselves;
- is at risk of modern slavery, trafficking or exploitation;
- is in a family circumstance presenting challenges for the child, such as substance abuse, adult mental health problems or domestic abuse;
- has returned home to their family from care;
- is showing early signs of abuse and/or neglect;
- is at risk of being radicalised or exploited;
- is a privately fostered child.²

4.7 Kingsbury Academy recognises that abuse can take many different forms. Staff will also receive training on the following issues and action will be taken if Kingsbury Academy believes that a child is at risk of or is the victim of;

- physical abuse;
- sexual abuse;
- child sexual exploitation;
- emotional abuse;
- neglect;
- bullying, including cyber- or online-bullying;
- child criminal exploitation (including involvement in county lines);
- domestic abuse;
- fabricated or induced illness;
- faith-based abuse;
- female genital mutilation;
- forced marriage;
- cuckooing
- gangs or youth violence;
- gender-based violence;
- hate;
- radicalisation;
- relationship abuse;
- serious violence;

² Taken from paragraph 18, Keeping Children Safe in Education (September 2020)

- sexual violence or sexual harassment (including peer on peer abuse/child on child abuse/child on child abuse);
- sexting;
- So-called 'honour-based' abuse;
- trafficking and modern slavery.

4.8 Kingsbury Academy will also take action to protect;

- Children missing education;
- Children missing from home or care.

4.9 There are other familial issues that can have a detrimental impact on children.

We work with other agencies in line with Keeping Children Safe in Education (2020) to support children and families in the following circumstances;

- Children facing the court procedures and/or children in the court system;
- Children with family members in prison;
- Children who are homeless;
- Children who need a social worker.

4.10 Child potentially at greater risk of harm

4.10.1 The school recognises that some children need a social worker due to abuse, neglect or family circumstances and that abuse and trauma can leave children vulnerable to further harm, as well as educational disadvantage.

4.10.2 The Designated Safeguarding Lead will hold information relating to social workers working with children in the school.

4.10.3 This information will inform decisions about safeguarding and promoting welfare (including the provision of pastoral and/or academic support).

4.11 Mental Health

4.11.1 The school recognise that safeguarding and promoting the welfare of children includes preventing the impairment of children's mental health or development.

4.11.2 All staff will be aware that mental health problems may be an indicator that a child is suffering or is at risk of suffering abuse, neglect or exploitation.

4.11.3 Staff will not attempt to make a diagnosis of a mental health problem unless they are appropriately trained.

4.11.4 We recognise that staff are well-placed to observe behaviour that may indicate that a child is experiencing a mental health problem, or is at risk of developing one. There are clear systems and processes in place for identifying possible mental health problems. If staff are concerned that a child is suffering a mental health problem, they should inform a member of the DSL team who will escalate and refer to MASH if required.

4.11.5 If staff are concerned that a child is experiencing a mental health problem that is also a safeguarding concern, they must report this to the

Designated Safeguarding Lead (or deputy Designated Safeguarding Lead) immediately.

4.11.7 Further information, guidance and advice regarding mental health can be found in paragraph 38 of Keeping Children Safe in Education 2020.

4.12 Kingsbury Academy have a duty to refer any children who are living in a private fostering arrangement to the local authority.

4.13 All schools are subject to a duty under section 26 of the Counter-Terrorism and Security Act 2015 in the exercise of their functions to have "due regard" to the need to prevent people from being drawn into terrorism. See Appendix B for further information on Kingsbury Academy Prevent duty.

4.14 If any member of staff is unsure about signs of abuse or neglect, they should speak to the Designated Safeguarding Lead.

4.15 See Appendix B for further information and guidance on the above issues.³

5 Responding to signs of abuse

5.1 If a member of staff, parent or member of the public is concerned about a child's welfare, they should report it to the designated safeguarding lead as soon as possible. On occasions when the designated safeguarding lead is not available, it should be reported to the deputy safeguarding lead without delay. Although any member of staff can make a referral to Children's Social Care, where possible there should be a conversation with the Designated Safeguarding Lead.

5.2 If anyone other than the Designated Safeguarding Lead makes a referral to children's social care or to the police, they should inform the DSL as soon as possible.

5.2 All staff will be alert to indicators of abuse and will report any of the following to the Designated Safeguarding Lead immediately;

- Any concern or suspicion that a child has sustained an injury outside what is reasonably attributable to normal play;
- Any concerning behaviours exhibited by children that may indicate that they have been harmed or are at risk of harm, including unusual changes in mood or behaviour, concerning use of language and/or concerning drawings or stories.
- Any significant changes in attendance or punctuality;
- Any significant changes in a child's presentation;
- Any concerns relating to people who may pose a risk of harm to a child; and/or
- Any disclosures of abuse that children have made.

5.3 There will be occasions where a child discloses abuse directly to a member of staff. If this happens, the member of staff will;

- listen carefully to the child and believe what they are saying;

³ Please note that definitions of physical, sexual, emotional abuse and neglect are contained in the main body of the policy. Further information about other safeguarding issues and indicators of abuse can be found in Appendix B.

- not promise confidentiality, as information may need to be passed on so the child and family can receive additional support;
- only ask for clarification if something is unclear and will not ask 'leading' questions;
- report disclosure to the designated safeguarding lead as soon as possible, certainly by the end of the day;
- only discuss the issue with colleagues that need to know about it; and
- will write up the disclosure and pass it to the designated safeguarding lead. It is likely they will have a discussion with the DSL prior to this.

5.4 The designated safeguarding lead will make a decision about the action that needs to be taken following a member of staff raising a concern about a child, or following a direct disclosure. The DSL may;

- Manage support for the child internally;
- Seek advice from the social worker advice line in the MASH;
- Instigate single agency intervention and work directly with the family to improve the situation;
- Offer an Early Help Assessment to provide multi-agency help to a family;
- In cases where children are deemed to be at significant risk of harm, the DSL will refer cases to the MASH for statutory intervention. Parental consent will be obtained wherever possible before referring cases to the MASH. However, if Kingsbury Academy is worried that telling parents will mean the child is at greater risk of harm, we may do this without informing them.
- If parents do not consent to a referral but the school believes that a child is at significant risk of harm, a referral will still be made to children's social care.

5.5 For further information about the Coventry Safeguarding Children Partnership's 'Right Help, Right Time' guidance, which is used by Kingsbury Academy to make decisions about protecting children, please visit <http://www.coventry.gov.uk/righthelprighttime>.

5.6 See page 19 for flowchart of actions that will be taken where there are concerns about a child (taken from Keeping Children Safe in Education, September 2020).

5.7 In cases where members of staff become aware that Female Genital Mutilation (FGM) has been carried out on a female below the age of 18, they have a mandatory duty to report this to the police without delay and will do so. Staff should refer this to the DSL, but the legislation requires regulated health and social care professionals and teachers in England and Wales to make a report to the police where, in the course of their professional duties, they either;

- are informed by a girl under 18 that an act of FGM has been carried out on her; or
- observe physical signs which appear to show that an act of FGM has been carried out on a girl under 18 and they have no reason to believe

that the act was necessary for the girl's physical or mental health or for purposes connected with labour or birth.⁴

5.8 Kingsbury Academy understands that both adults and other children can perpetrate abuse, and peer on peer abuse/child on child abuse is taken very seriously. Peer on peer abuse/child on child abuse can include bullying, cyber-bullying, physical abuse, sexting, sexual violence and/or harassment, upskirting, and initiation/hazing ceremonies. The school recognise that safeguarding issues can manifest as peer on peer abuse/child on child abuse.

5.8.1 All members of staff will be made aware of the school's policy and procedures with regards to peer on peer abuse/child on child abuse. The school will ensure staff understand what is meant by peer on peer abuse/child on child abuse and the school policy on peer on peer abuse/child on child abuse by ensuring that all staff members have read and understood the policies and procedures.

5.8.2 The school will work to prevent peer on peer abuse/child on child abuse by following the principles set out in part 5 of Keeping Children Safe in Education when managing reports and supporting victims of peer-on-peer abuse.

5.8.3 In the event that an allegation of peer on peer abuse/child on child abuse is made, Kingsbury Academy will investigate this *and ensure that all concerns are acted upon immediately.*

5.8.4 In the event that an allegation of peer on peer abuse/child on child abuse is made, victims and alleged perpetrators will be supported by Kingsbury Academy. Allegations of peer on peer abuse/child on child abuse will be recorded, investigated and dealt with according to our policy

5.8.5 Kingsbury Academy will never pass off peer on peer abuse/child on child abuse as 'banter' or 'part of growing up'.

5.8.6 Issues that may affect our children include physical abuse such as hitting, kicking, shaking, biting, hair pulling or otherwise causing physical harm.

5.8.7 Kingsbury Academy will adhere to guidance set out in Keeping Children Safe in Education (2020) and Sexual Violence and Sexual Harassment in Schools (May 2018) when responding to incidents of peer on peer abuse/child on child abuse.

5.8.8 All staff will be made aware that 'upskirting' is a criminal offence.

5.9 Youth Produced Sexual Imagery ('sexting')

5.9.1 'Sexting' refers to any sharing of youth-produced sexual imagery between children. This includes;

- A person under the age of 18 creating and sharing sexual imagery of themselves with a peer under the age of 18;

⁴ *introduced in Section 5B of the FGM Act 2003, as inserted by section 74 of the Serious Crime Act 2015

- A person under the age of 18 sharing sexual imagery created by another person under the age of 18 with a peer under the age of 18 or an adult;
- A person under the age of 18 being in possession of sexual imagery created by another person under the age of 18.

5.9.2 Kingsbury Academy has a responsibility to educate children in the risks relating to 'sexting' and how to keep themselves safe online.

5.9.3 Any incidents or suspected incidents of 'sexting' should be reported to the DSL without delay.

5.9.4 Once reported to the DSL, the DSL will decide on the appropriate course of action. This could include;

- Confiscation of mobile phones in line with guidance 'Searching, Screening and Confiscation, (January 2018);
- Referrals to the police and/or MASH;
- Sanctions in accordance with behaviour policy;
- Support for young people involved to prevent reoccurrence;

5.9.5 Any incidents of 'sexting' involving the following will result in a MASH and/or Police referral;

- Adult involvement;
- Coercion or blackmail;
- Children under the age of 13;
- Extreme, or violent content;
- Immediate risk of harm.

5.9.6 Staff will not view images or videos on pupil devices. Confiscated devices will be stored securely and passed to the relevant agencies.

5.9.7 We will work with parents as necessary if their child is involved in 'sexting'.

5.9.8 We operate a culture of safeguarding and young people should feel confident to disclose if they have sent an inappropriate image of themselves. Children will always be supported to retrieve and delete the images.

5.9 Serious Violence

5.9.1 All staff will be made aware of indicators, which may signal that children are at risk of, or are involved with serious violent crime.

5.9.2 All staff will be made aware of the risks associated with serious violence, criminal networks and gangs and understand the measures in place to prevent these.

5.9.3 All staff will have an awareness of Child Criminal Exploitation and behaviours linked to Child Criminal Exploitation. Further information about Child Criminal Exploitation can be found in paragraph 28 of Keeping Children Safe in Education (2020).

5.10 **Searching, Screening and Confiscation**

5.10.1 Where necessary, searching, screening and confiscation will be used to safeguard a child/children in Kingsbury Academy.

5.10.2 Kingsbury Academy adheres to 'Searching, Screening and Confiscation: Advice for Schools (January 2018).

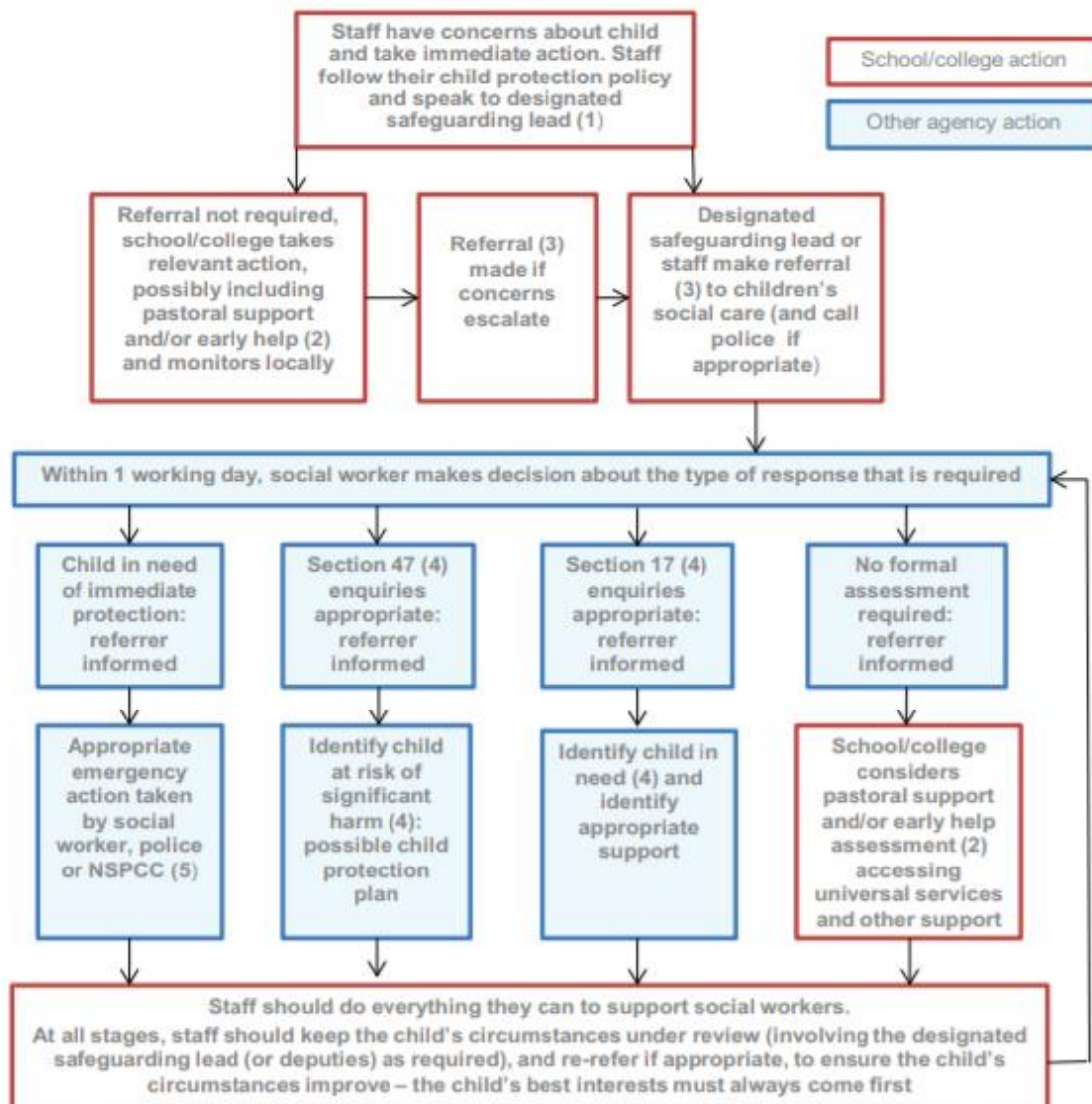
5.10.3 Please see searching, screening and confiscation policy (should either be a standalone policy, in positive handling or in behaviour policy) for further information.

5.11 Extra-Familial Harm

5.11.1 Kingsbury Academy recognises that safeguarding incidents can be associated with factors outside the school and may take place outside of school. We also recognise that safeguarding incidents or behaviours can occur between children outside of school. We will always consider contextual safeguarding factors when responding to safeguarding incidents.

5.11.2 All staff will be made aware that safeguarding incidents and/or behaviours can be associated with factors outside Kingsbury Academy and/or can occur between children outside these environments.

Actions where there are concerns about a child



(1) In cases which also involve a concern or an allegation of abuse against a staff member, see Part four of this guidance.

(2) Early help means providing support as soon as a problem emerges at any point in a child's life. Where a child would benefit from co-ordinated early help, an early help inter-agency assessment should be arranged. Chapter one of [Working Together to Safeguard Children](#) provides detailed guidance on the early help process.

(3) Referrals should follow the process set out in the local threshold document and local protocol for assessment. Chapter one of [Working Together to Safeguard Children](#).

(4) Under the Children Act 1989, local authorities are required to provide services for children in need for the purposes of safeguarding and promoting their welfare. Children in need may be assessed under section 17 of the Children Act 1989. Under section 47 of the Children Act 1989, where a local authority has reasonable cause to suspect that a child is suffering or likely to suffer significant harm, it has a duty to make enquiries to decide whether to take action to safeguard or promote the child's welfare. Full details are in Chapter one of [Working Together to Safeguard Children](#).

(5) This could include applying for an Emergency Protection Order (EPO).

5.11 To raise concerns about children, members of staff should contact the Multi-Agency Safeguarding Hub (MASH) by telephone to discuss the referral. They should then complete the online Multi-Agency Referral Form (MARF) and submit this to the MASH. The school will follow up referrals if we do not receive feedback from social care.

MASH Telephone number: 02476 788 555

MASH online referral form: <http://www.coventry.gov.uk/safeguardingchildren>

Out of hours Emergency Duty Team: 02476 832 222

Prevent/Channel Referrals: Refer to MASH (mash@coventry.gov.uk) and to CTU_GATEWAY@west-midlands.pnn.police.uk

5.12 If a child's situation does not appear to be improving following a referral, the school may re-refer the child. We will also consider using the **Coventry Safeguarding Children Partnership's Managing Professional Disagreements policy**. to ensure that our concerns have been addressed and that the situation improves for the child.

6 Record-keeping

6.1 A written record of all safeguarding and/or child protection concerns, discussions and decisions made will be kept in individual children's files. This will be separate from the main school file and will only be accessed by the relevant safeguarding staff.

6.2 Kingsbury Academy keeps all safeguarding files electronically, using a system called My Concern.

6.3 Staff will submit all concerns in writing to the DSL at the earliest opportunity. This may be after having a verbal conversation, but conversations will also be followed up in writing.

6.4 In the event that a child moves school, the safeguarding file will be transferred to the new setting securely and separately from the main school file. Once received by the new school, this school will not retain the information.

6.5 The school will seek at least two emergency contacts for every child.

6.6 All data processed by Kingsbury Academy is done so in line with the General Data Protection Guidelines **and the Data Protection Act (2018)**. Please see the following policies for additional information;

6.7 Further information regarding information sharing and data processing in relation to safeguarding can be found in Part Two of Keeping Children Safe in Education (September 2020).

7 Photography and Images

7.1 Consent from parents to photograph children at school events for promotional reasons will be sought when the child joins Kingsbury Academy

7.2 Parents can withdraw consent at any time and must notify Kingsbury Academy if they do not wish their child's photographs to be used.

7.3 Photographs of children used publicly will not be displayed with their name or other personal information.

7.4 Photographs of children will be processed in line with the General Data Protection Regulation.

8 Early Help

8.1 Kingsbury Academy is committed to supporting families as soon as a possible problem arises. It is more effective to support a family through early help than reacting to a problem later. Everyone who comes into contact with children and their families and carers have a role to play in safeguarding children. Kingsbury Academy works closely with its neighbouring family hub to work with families in the community to improve outcomes for children.

Pathways Family Hub: Radford Primary School, Lawrence Saunders Rd, Coventry, CV6 1HD, Tel: 02476 788444

8.2 Kingsbury Academy works within the Coventry Safeguarding Children Partnership's '[Right Help, Right Time](#)' framework, available on the CSCP website.

9 Staff training

9.1 In order for staff to be able to understand and discharge their safeguarding and child protection duties, Kingsbury Academy has committed to training staff throughout the academic year. All staff members will be made aware of Kingsbury Academy's safeguarding processes and structures and will receive training on these as part of their induction. As part of this training and their annual refresher, they will also receive;

- This 'Safeguarding and Child Protection Policy';
- The staff Code of Conduct
- Copies of Part 1 and Annex A of Keeping Children Safe in Education (September 2020)
- School procedures for Children Missing Education
- The school Behaviour Policy

9.2 Staff at Kingsbury Academy will;

Undertake training throughout the year that includes safeguarding, PREVENT Duty, mental health, DSL briefings, safeguarding bulletins.

9.3 Kingsbury Academy recognise that children may engage in risky behaviours that may put them at additional risk of danger. These can include drug taking, alcohol abuse, truancing and 'sexting'⁵. Staff will be training in these areas in order to be able to further recognise if a child is at risk of harm.

10 Safer Recruitment

10.1 Kingsbury Academy is committed to providing children with a safe environment, in which they can learn. We take safer recruitment seriously and all staff are subject to the following checks;

- Identity check;
- DBS clearance;
- Prohibition from teaching checks (where required);

⁵ Also known as 'youth produced sexual imagery'.

- Barred List check;
- Section 128 checks (as required - leadership and management);
- Reference check (two references required);
- Professional qualifications check ;
- Right to work in the UK check;
- Further checks for those who have lived outside the UK;
- Disqualification Under the Childcare Act 2006 checks (as required).

10.2 A record of all checks on members of staff will be held on the Single Central Record.

10.3 All new members of staff will be required to obtain DBS clearance. Kingsbury Academy reserves the right to re-check DBS clearance for any member of staff where information is received that indicates that they may pose a risk to children.

10.4 At least one member of every interview panel will have undergone Safer Recruitment training.

10.5 We take proportionate decisions on whether to check individuals beyond what is required.

10.6 Any visitor to the school who has not been subject to the necessary checks will be supervised at all times.

10.7 All safer recruitment practices at Kingsbury Academy comply with Keeping Children Safe in Education (September 2020). See Part 3 of Keeping Children Safe in Education (September 2020) for further information.

10.8 See Safer Recruitment policy for further details.

11 Allegations of abuse against staff

11.1 Kingsbury Academy takes all safeguarding concerns and/or allegations against staff seriously and will manage them in line with this policy, Part Four of Keeping Children Safe in Education (September 2020) and the CSCP Guidance, ['Allegations Against Staff and Volunteers'](#).

[11.2 Allegations or concerns may include](#)

- Staff having behaved in a way that has harmed a child, or may have harmed a child;
- Staff possibly committing a criminal offence against or related to a child;
- Staff behaving towards a child or children in a way that indicates he or she may pose a risk of harm to children; or
- Staff behaving or possibly behaving in a way that indicates they may not be suitable to work with children.

11.2 If a concern or allegation of abuse arises against the Headteacher, it must be reported to the Chair of Trustees without delay.

11.3 If a concern or allegation of abuse arises against any member of staff, supply teacher or volunteer other than the Headteacher, it must be reported to the Headteacher without delay. This includes supply staff, volunteers and all staff outlined in paragraph 1.5 of this policy.

11.4 Concerns or allegations of abuse against staff must be reported to the Headteacher or Chair of Governors as appropriate and not discussed directly with the person involved.

11.5 The Headteacher or Chair of Governors should consider if the concern or allegation meets the threshold for Designated Officer intervention. The details of the LAdo can be found on the front of this policy.

11.6 Concerns relating to a position of trust issue will be referred to the Local Authority designated officer within 24 hours.

11.7 If a child has suffered or may have suffered abuse or harm, a MASH referral will also be made.

11.8 In the instances where an allegation is dealt with internally, the Local Authority designated officer will provide information and support to Kingsbury Academy in managing the allegation.

11.9 A referral to the Disclosure and Barring Service will be made if a member of staff is dismissed or removed from their post as a result of safeguarding concerns, or would have been removed if they had not have resigned.

11.10 Supply Teachers

11.10.1 Although the school does not directly employ supply teachers, the school will ensure that any concerns or allegations against supply teachers are handled properly.

11.10.2 The school will never cease to use a supply teacher for safeguarding reasons without liaising with the Local Authority Designated Officer and reaching a suitable outcome.

11.10.3 Governing bodies/proprietors will liaise with the supply agency to determine whether to suspend or redeploy the supply teacher whilst they carry out their investigation.

11.10.4 The school will inform supply agencies of its process for managing allegations, including inviting the agency's human resource manager (or equivalent) to meetings and regularly updating agencies on relevant school policies.

11.9 **Whistleblowing**

11.9.1 Kingsbury Academy operates a culture of safeguarding and all staff should report any concerns about poor or unsafe practice, or Kingsbury Academy's safeguarding processes to the senior leadership team.

11.9.2 The senior leadership team will take all concerns seriously.

11.9.3 In the event that a member of staff is unable to raise an issue with senior leadership in school, they should refer to Part 1 of Keeping Children Safe in Education for additional guidance on whistleblowing procedures.

12 Promoting safeguarding and welfare in the curriculum

12.1 Kingsbury Academy recognises the importance of teaching children how to stay safe and look after their mental health and are committed to equipping children with the skills and knowledge to have successful and happy lives.

12.2 The school will teach children about safeguarding, including online safety. As part of a broad and balanced curriculum, the school will cover relevant issues in line with government guidance on Relationships Education, Relationships and Sex Education and Health Education.

12.3 Children at Kingsbury Academy will receive the following as part of our promotion of safeguarding across the curriculum: safeguarding issues will be addressed through the PSHE curriculum, for example self-esteem, emotional literacy, assertiveness, power, healthy relationship education, online safety, bullying including cyber bullying.

13 Children Looked After

13.1 The most common reason for children to be looked-after is because they have experienced abuse and/or neglect. Kingsbury Academy recognises that children looked after may have additional vulnerabilities. The Designated Lead for Looked-After and Previously Looked-After Children is Susannah Roberts

13.2 Staff will receive training on how to best safeguard children who are Looked-After and Previously Looked-After.

13.3 The school will work with Personal Advisors when children leave care (where applicable).

13.4 Kingsbury Academy is committed to working with other agencies to ensure the best outcomes for Looked-After and Previously Looked-After children.

14 Children with Special Educational Needs

14.1 As outlined in Keeping Children Safe in Education (2020), Kingsbury Academy is aware that children with additional needs or disabilities may be more vulnerable to abuse and additional barriers may exist when recognising abuse and neglect. This could be because:

- assumptions that indicators of possible abuse such as behaviour, mood and injury relate to the child's disability without further exploration;
- being more prone to peer group isolation than other children;
- the potential for children with SEN and disabilities being disproportionately impacted by behaviours such as bullying, without outwardly showing any signs; and
- communication barriers and difficulties in overcoming these barriers.⁶

4.2 Staff will be trained in recognising signs of abuse in children with SEN and disabilities.

4.3 Staff will take into account the needs of a child when responding to concerns of abuse or when taking a disclosure. We recognise that some children require specialist intervention to communicate and advice from the SENCO will be sought in these circumstances.

⁶ Keeping Children Safe in Education, September 2020

4.4 Safeguarding learning opportunities within the curriculum will be appropriately differentiated to ensure all children can access it.

15 Use of reasonable force

15.1 There may be occasions when staff are required to use reasonable force to safeguard children. We will not use any more force than is necessary. Staff are trained in Team Teach though this is only ever used as a last resort and we use de-escalating techniques throughout the school. Incidents are recorded on our behaviour system – Behaviour Watch.

16 Summary

19.1 The school is committed to safeguarding children and will always make safeguarding decisions that are in the best interests of each child. For further information or if you have any queries about this policy, please contact the school.

Appendix A

The school's safeguarding policy is intended to be used in conjunction with the following policies; behaviour policy, anti-bullying policy, online safety. The school adheres to Coventry Safeguarding Children Partnership Policies, which can be found here:

- [Allegations Against Staff or Volunteers \(CSCP\)](#)
- [Allegations Against Members of Staff](#)
- Anti – Bullying Policy
- Anti-Discrimination and Harassment Policy
- Attendance Policy
- Behaviour Policy
- Children/Young people with Medical Needs
- Children Missing in Education Procedures
- Complaints Policy
- Critical Incident Plan
- Data Protection Policy and Privacy Notice
- Drugs and Alcohol Policy
- Equalities Policy
- [Managing Professional Disagreements \(CSCP\)](#)
- Health & Safety Policy
- HR & Governance Policy
- Online Safety Policy
- Intimate Care Policy
- IT Policy
- Lone Working Policy/Home visits policy
- Medicine & First Aid Policy
- Primary-Secondary Transition Policy
- PSHE Policy
- SRE Policy Self-harm/Mental Health Policy
- Safer Recruitment Policy
- Site Security Policy
- SEND Policy
- Staff Code of Conduct
- Trips and Visits Policy
- Use of Reasonable Force Policy
- Visitor Management Policy
- Whistleblowing Policy

Appendix B – Further Safeguarding Information

Types of Abuse

As outlined in paragraph 4.4, the school will take action if we believe a child is at risk of or is suffering from abuse. Abuse is not limited to physical, emotional, sexual abuse and neglect. For further information on the definitions of the types of abuse below, please refer to Keeping Children Safe in Education (2020), Annex A.

See below for policy information relating to other key safeguarding issues. All decisions taken in responding to concerns of abuse will be taken in the best interests of the child.

FABRICATED ILLNESS

Fabricated or Induced Illness is a condition whereby a child suffers harm through the deliberate action of her/his main carer and which is attributed by the adult to another cause. Concerns will be raised when it is considered that the health or development of a child is likely to be significantly impaired or further impaired by the actions of a carer or carers having fabricated or induced illness. The range of symptoms and body systems involved in the spectrum of fabricated or induced illness are extremely wide.

There are four main ways of the carer fabricating or inducing illness in a child:

- Fabrication of signs and symptoms, including fabrication of past medical history;
- Fabrication of signs and symptoms and falsification of hospital charts, records, letters and documents and specimens of bodily fluids;
- Exaggeration of symptoms/real problems. This may lead to unnecessary investigations, treatment and/or special equipment being provided;
- Induction of illness by a variety of means.

The above four methods are not mutually exclusive.

Harm to the child may be caused through unnecessary or invasive medical treatment, which may be harmful and possibly dangerous, based on symptoms that are falsely described or deliberately manufactured by the carer, and lack independent corroboration.

Concern may be raised at the possibility of a child suffering significant harm as a result of having illness fabricated or induced by their carer.

7. CHILD SEXUAL EXPLOITATION

Child sexual exploitation is a form of child sexual abuse. It occurs where an individual or group takes advantage of an imbalance of power to coerce,

manipulate or deceive a child or young person under the age of 18 into sexual activity (a) in exchange for something the victim needs or wants, and/or (b) for the financial advantage or increased status of the perpetrator or facilitator. The victim may have been sexually exploited even if the sexual activity appears consensual. Child sexual exploitation does not always involve physical contact; it can also occur through the use of technology.

8. CHILD CRIMINAL EXPLOITATION

As set out in the Serious Violence Strategy, published by the Home Office, where an individual or group takes advantage of an imbalance of power to coerce, control, manipulate or deceive a child or young person under the age of 18 into any criminal activity (a) in exchange for something the victim needs or wants, and/or (b) for the financial or other advantage of the perpetrator or facilitator and/or (c) through violence or the threat of violence. The victim may have been criminally exploited even if the activity appears consensual. Child criminal exploitation does not always involve physical contact; it can also occur through the use of technology.

9. COUNTY LINES

As set out in the Serious Violence Strategy, published by the Home Office, a term used to describe gangs and organised criminal networks involved in exporting illegal drugs into one or more importing areas within the UK, using dedicated mobile phone lines or other form of 'deal line'. They are likely to exploit children and vulnerable adults to move and store the drugs and money, and they will often use coercion, intimidation, violence (including sexual violence) and weapons.

10. CUCKOOING

Cuckooing is a term used when criminal gangs target the most isolated, vulnerable members of the community, befriending them with the intention of taking over their homes to deal drugs and carry out other criminal activities. Those that tend to be targeted and exploited are current and ex drug users, or have a mental health, physical or learning disability. There is no age limit to those being targeted and older adults that are socially isolated can become easy targets with tactics of befriending, moving in and then taking over. The sole purpose is to befriend a vulnerable person, who normally lives alone, with the end goal of taking over their homes. Tactics used include building up a drug debt and then when the individual reaches a point of not being able to pay that debt, the exploitation grows to the point of threats and actions of violence that the vulnerable person becomes too frightened to seek help.

11. RESPONSES FROM PARENTS/CARERS

Research and experience indicates that the following responses from parents may suggest a cause for concern across the categories of abuse:

- Delay in seeking treatment that is obviously needed;
- Unawareness or denial of any injury, pain or loss of function (for example, a fractured limb);
- Incompatible explanations offered, several different explanations or the child is said to have acted in a way that is inappropriate to her/his age and development;
- Reluctance to give information or failure to mention other known relevant injuries;
- Frequent presentation of minor injuries;
- A persistently negative attitude towards the child;
- Unrealistic expectations or constant complaints about the child;
- Alcohol misuse or other drug/substance misuse;
- Parents request removal of the child from home; or
- Violence between adults in the household;
- Evidence of coercion and control.
- Be mindful of 'disguised compliance'

12. DISABLED CHILDREN

When working with children with disabilities, practitioners need to be aware that additional possible indicators of abuse and/or neglect where parents may be causing maltreatment, neglecting or abusing their children may also include:

- A bruise in a site that may not be of concern on an ambulant child such as the shin, maybe of concern on a non-mobile child;
- Not getting enough help with feeding leading to malnourishment;
- Poor toileting arrangements;
- Lack of stimulation;
- Unjustified and/or excessive use of restraint ;
- Rough handling, extreme behaviour modification such as deprivation of medication, food or clothing, disabling wheelchair batteries;
- Unwillingness to try to learn a child's means of communication;
- Ill-fitting equipment, for example, callipers, sleep boards, inappropriate splinting;
- Misappropriation of a child's finances; or
- Inappropriate invasive procedures.

There are other familiar issues that can have a detrimental impact on children. We work with other agencies in line with Keeping Children Safe in Education (2020) to support children and families in the following circumstances;

- Children facing the court procedures and/or children in the court system;
- Children with family members in prison;
- Children who are homeless;
- Children who need a social worker

Child potentially at greater risk of harm

The school recognises that some children need a social worker due to abuse, neglect or family circumstances and that abuse and trauma can leave children vulnerable to further harm, as well as educational disadvantage. The DSL will hold information relating to social workers working with children in the school. This information will inform decisions about safeguarding and promoting welfare (including the provision of pastoral and/or academic support).

Mental Health

The school recognises that safeguarding and promoting the welfare of children includes preventing the impairment of children's mental health or development. All staff will be aware that mental health problems may be an indicator that a child is suffering or at risk of suffering abuse, neglect, or exploitation. Staff will not attempt to make a diagnosis of a mental health problem unless they are appropriately trained. We recognise that staff are well placed to observe behaviour that may indicate that a child is experiencing a mental health problem or is at risk of developing one. There are clear systems and processes in place for identifying possible mental health problems. If staff are concerned that a child is suffering a mental health problem or a mental health problem that is also a safeguarding concern, they should approach the DSL immediately to escalate and refer where needed. Further information, guidance and advice regarding mental health can be found in paragraph 38 of KCSIE 2020.

Children missing from education, home or care

The school will also take action to protect;

- Children missing education
- Children missing from home or care

Children Missing Education

A child going missing, particularly repeatedly, can act as a vital warning sign of a range of safeguarding risks, including abuse and neglect, which may include sexual abuse or exploitation; child criminal exploitation; mental health problems; substance abuse and other issues. Early intervention is necessary to identify the existence of any underlying safeguarding risk and to help prevent the risks of them going missing in future. Our Academy will hold two or more emergency contact numbers

for each pupil. It is good practice to give our Academy additional options to make contact with a responsible adult when a child missing education, is also identified as a welfare and/or safeguarding concern. The Academy must notify the Local Authority of any pupil/student who fails to attend school regularly after making reasonable enquiries, or has been absent without the Academy's permission for a continuous period of 5 days or more. The Academy (regardless of designation) must also notify the Local Authority of any pupil/student who is to be deleted from the admission register because s/he:

- Has been taken out of school by their parents and is being educated outside the school system (e.g. home education);
- Has ceased to attend school and no longer lives within a reasonable distance of the school at which s/he is registered (moved within the city, within the country or moved abroad but failed to notify the school of the change);
- Displaced as a result of a crisis e.g. domestic violence or homelessness;
- Has been certified by the school medical officer as unlikely to be in a fit state of health to attend school before ceasing to be of compulsory school age, and neither s/he nor his/her parent has indicated the intention to continue to attend the school after ceasing to be of compulsory school age;
- Is in custody for a period of more than four months due to a final court order and the proprietor does not reasonably believe that s/he will return to the school at the end of that period; or
- Has been permanently excluded.

Our Academy will demonstrate that we have taken reasonable enquiries to ascertain the whereabouts of children that would be considered 'missing'.

Children Missing from home or care

Please refer to attendance policy for safeguarding procedures for children missing education.

Private Fostering

The school have a duty to refer any children who are living in a private fostering arrangement to the local authority.

We will do this through a MASH referral. It is important that parents/carers inform us if a child is going to be staying at an alternative address to that of their primary care-givers for more than

Indicators of abuse

See below for possible indicators of abuse. (Taken from *What to do if you are worried a child is being abused*, 2015)

- Children whose behaviour changes – they may become aggressive, challenging,

- disruptive, withdrawn or clingy, or they might have difficulty sleeping or start
- wetting the bed;
- Children with clothes which are ill-fitting and/or dirty;
- Children with consistently poor hygiene;
- Children who make strong efforts to avoid specific family members or friends,
- without an obvious reason;
- Children who don't want to change clothes in front of others or participate in
- physical activities;
- Children who are having problems at school, for example, a sudden lack of
- concentration and learning or they appear to be tired and hungry;
- Children who talk about being left home alone, with inappropriate carers or with
- strangers;
- Children who reach developmental milestones, such as learning to speak or walk,
- late, with no medical reason;
- Children who are regularly missing from school or education;
- Children who are reluctant to go home after school;
- Children with poor school attendance and punctuality, or who are consistently late
- being picked up;
- Parents who are dismissive and non-responsive to practitioners' concerns;
- Parents who collect their children from school when drunk, or under the influence
- of drugs;
- Children who drink alcohol regularly from an early age;
- Children who are concerned for younger siblings without explaining why;
- Children who talk about running away; and
- Children who shy away from being touched or flinch at sudden movements.

The school recognises that the above list of indicators is not exhaustive and staff will receive training on indicators of abuse.

Child protection and safeguarding: COVID-19 addendum

Contents

Important contacts	36
1. Scope and definitions.....	Error! Bookmark not defined.
2. Core safeguarding principles.....	37
3. Reporting concerns	37
4. DSL (and deputy) arrangements	37
5. Working with other agencies	37
6. Monitoring attendance	37
7. Peer-on-peer abuse	38
8. Concerns about a staff member, supply teacher or volunteer.....	38
9. Contact plans	38
10. Safeguarding all children.....	39
11. Online safety	39
12. Mental health.....	39
13. Staff and volunteer recruitment	40
14. Safeguarding induction and training.....	40
15. Monitoring arrangements.....	40
16. Links with other policies	40

Important contacts

ROLE	NAME	CONTACT DETAILS
Designated safeguarding lead (DSL)	Susannah Roberts	02476 594952
Deputy DSL	Suzanne Everitt	02476 594952
Designated member of senior leadership team if DSL (and deputy) can't be on site	Jade Wade Clair Nutt	02476 594952 02476 594952
Headteacher	Susannah Roberts	02476 594952
Local authority designated officer (LADO)	Mark Goddard	02476 978499
Chair of governors	John Darch	02476 594952 enquiry@kingsbury.thrive.ac

1. Scope and definitions

This addendum applies from the start of the autumn term 2020. It reflects updated advice from our local authority (LA) Coventry

It sets out changes to our normal child protection policy in light of coronavirus, and should be read in conjunction with that policy. Unless covered here, our normal child protection policy continues to apply.

This addendum is subject to change, in response to any new or updated guidance the government may publish. We will keep it under review as set out in section 15 below.

In this addendum, where we refer to measures to protect pupils who are at home, this means those who are learning at home for reasons to do with coronavirus – for example, due to clinical and/or public health advice, such as if there's a local lockdown or if they need to self-isolate.

In this addendum, where we refer to vulnerable children, this means those who:

- Are assessed as being in need, including children:
 - With a child protection plan
 - With a child in need plan
 - Looked after by the local authority
- Have been assessed as otherwise vulnerable by educational providers or LAs, for example those who are:
 - On the edge of receiving support from children's social care services
 - Adopted
 - Living in temporary accommodation
 - Young carers
 - Considered vulnerable by the school and/or LA

2. Core safeguarding principles

We will follow the statutory safeguarding guidance, [Keeping Children Safe in Education](#).

We will always have regard for these important safeguarding principles:

- The best interests of children must come first
- If anyone has a safeguarding concern about any child, they should act on it immediately
- A designated safeguarding lead (DSL) or deputy should be available at all times (see section 4 for details of our arrangements)
- It's essential that unsuitable people don't enter the school workforce or gain access to children
- Children should continue to be protected when they are online

3. Reporting concerns

All staff and volunteers must continue to act on any concerns they have about a child immediately. It is still vitally important to do this, both for children at school and those at home.

As a reminder, all staff should continue to work with and support children's social workers, where they have one, to help protect vulnerable children.

4. DSL (and deputy) arrangements

We aim to have a trained DSL or deputy DSL on site wherever possible. Details of all important contacts are listed in the 'Important contacts' section at the start of this addendum.

If our DSL (or deputy) can't be on site, they can be contacted remotely by the office calling mobiles. Mobile numbers are available on eduspot.

On occasions where there is no DSL or deputy on site, a senior leader will take responsibility for co-ordinating safeguarding. This will be Clair Nutt, Assistant Head Teacher and Jade Wade, Lead Coordinator. You can contact them by calling 02476 594952

The senior leader will be responsible for liaising with our off-site DSL (or deputy) to make sure they (the senior leader) can:

- Identify the most vulnerable children in school
- Update and manage access to child protection files, where necessary
- Liaise with children's social workers where they need access to children in need and/or to carry out statutory assessments

5. Working with other agencies

We will continue to work with children's social care, with virtual school heads for looked-after and previously looked-after children, and with any other relevant safeguarding and welfare partners, to help keep children safe.

We will continue to update this addendum where necessary, to reflect any updated guidance from:

- The local authority, about children with education, health and care (EHC) plans, the local authority designated officer and children's social care, reporting mechanisms, referral thresholds and children in need

6. Monitoring attendance

We will resume taking our attendance register. We will also follow [guidance](#) from the Department for Education on how to record attendance and what data to submit.

All pupils of compulsory school age will be expected to attend school unless a statutory reason applies (for example, the pupil has been granted a leave of absence, is unable to attend because of sickness, is unable to attend because of clinical and/or public health advice, is absent for a necessary religious observance).

Where any child we expect to attend school doesn't attend, or stops attending, we will:

- Follow up on their absence with their parents or carers, by contacting them by phone. If unable to reach them, a phone call will be made to emergency contacts. If we are still unable to make contact then we will follow our child missing education procedures.
- Notify their social worker, where they have one

We will make arrangements with parents and carers to make sure we have up-to-date emergency contact details, and additional contact details where possible. This will be achieved by ensuring that the home school data collection sheet is completed and up to date.

7. Peer-on-peer abuse

We will continue to follow the principles set out in part 5 of Keeping Children Safe in Education when managing reports and supporting victims of peer-on-peer abuse.

Staff should continue to act on any concerns they have immediately – about both children attending school and those at home.

8. Concerns about a staff member, supply teacher or volunteer

We will continue to follow the principles set out in part 4 of Keeping Children Safe in Education.

Staff should continue to act on any concerns they have immediately – whether those concerns are about staff/supply teachers/volunteers working on site or remotely.

We will continue to refer adults who have harmed or pose a risk of harm to a child or vulnerable adult to the Disclosure and Barring Service (DBS).

We will continue to refer potential cases of teacher misconduct to the Teaching Regulation Agency. We will do this using the email address Misconduct.Teacher@education.gov.uk for the duration of the COVID-19 period, in line with government guidance.

9. Contact plans

We have contact plans for children with a social worker, and other children who we have safeguarding concerns about, for circumstances where the child is at home.

Each child has an individual plan, which sets out

- How often the school will make contact – this will be at least once a week
- Which staff member(s) will make contact – as far as possible, this will be staff who know the family well
- How staff will make contact – this will be over the phone, doorstep visits, or a combination of both

We have agreed these plans with children's social care where relevant, and will review them bi-weekly

If we can't make contact, we will follow child missing education and contact children's social care and the police.

10. Safeguarding all children

Staff and volunteers are aware that this difficult time potentially puts all children at greater risk.

Staff and volunteers will continue to be alert to any signs of abuse, or effects on pupils' mental health that are also safeguarding concerns, and act on concerns immediately in line with the procedures set out in section 3 above

10.1 Children returning to school

The DSL (or deputy) will do all they reasonably can to find out from parents and carers whether there have been any changes regarding welfare, health and wellbeing that they should be aware of before children return.

The DSL (and deputy) will be given time to support staff and children regarding new concerns (and referrals as appropriate) as children return to school.

Staff and volunteers will be alert to any new safeguarding concerns as they see pupils in person.

10.2 Children at home

The school will maintain contact with children who are at home. Staff will try to speak directly to children at home to help identify any concerns where appropriate. They will use school phones and devices to make calls home. Or, if necessary they will use personal phones but they will withhold their personal number.

Staff and volunteers will look out for signs like:

- Not completing assigned work
- No contact from children or families

11. Online safety

11.1 In school

We will continue to have appropriate filtering and monitoring systems in place in school. Our support is provided by tech team on 03448 012345

11.2 Outside school

Where staff are interacting with children online, they will continue to follow our existing staff behaviour policy/code of conduct/IT acceptable use policy

Staff will continue to be alert to signs that a child may be at risk of harm online, and act on any concerns immediately, following our reporting procedures as set out in section 3 of this addendum

We will make sure children know how to report any concerns they have back to our school, and signpost them to other sources of support too.

11.3 Working with parents and carers

We will make sure parents and carers:

- Are aware of the potential risks to children online and the importance of staying safe online
- Know what our school is asking children to do online, where relevant, including what sites they will be using and who they will be interacting with from our school

12. Mental health

12.1 Children returning to school

Staff and volunteers will be aware of the possible effects that this period may have had on pupils' mental health. They will look out for behavioural signs, including pupils being fearful, withdrawn, aggressive, oppositional or excessively clingy, to help identify where support may be needed. We will also be participating in Inset training on supporting children with mental health

12.2 Children at home

Where possible, we will continue to offer our current support for pupil mental health for all pupils which is delivered through our curriculum.

We will also signpost all pupils, parents/carers and staff to other resources to support good mental health at this time.

When setting expectations for pupils learning remotely and not attending school, teachers will bear in mind the potential impact of the current situation on both children's and adults' mental health.

Staff and volunteers will be alert to mental health concerns in children who are at home, and act on these immediately, following our reporting procedures as set out in section 3 of this addendum

13. Staff and volunteer recruitment

We continue to recognise the importance of robust safer recruitment procedures, so that staff and volunteers who work in our school are safe to work with children.

We will continue to follow our safer recruitment procedures, and part 3 of Keeping Children Safe in Education.

When carrying out DBS checks and right to work checks, we will follow the latest guidance from the DBS, Home Office and Immigration Enforcement as appropriate (for example, with regards to the process for verifying documents). We will inform candidates about the intended process as soon as reasonably practicable.

We will continue to do our usual checks on new volunteers, and do risk assessments to decide whether volunteers who aren't in regulated activity should have an enhanced DBS check, in accordance with paragraphs 183-188 of Keeping Children Safe in Education.

14. Safeguarding induction and training

We will make sure staff and volunteers are aware of changes to our procedures and local arrangements.

New staff and volunteers will continue to receive a safeguarding induction in line with the expectations of Keeping Children Safe in Education.

15. Monitoring arrangements

This policy will be reviewed as guidance from the LA or Department for Education is updated, and as a minimum reviewed each half term by Susannah Roberts, DSL

16. Links with other policies

This policy links to the following policies and procedures:

- Child protection policy
- Staff code of conduct
- Health and safety policy
- Online safety policy

