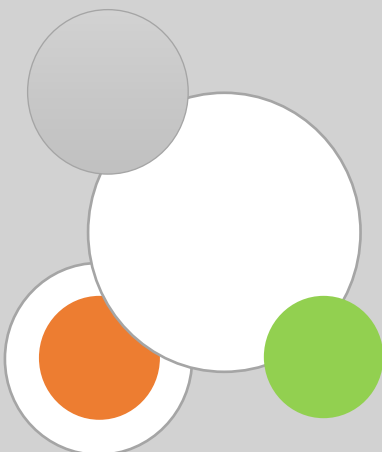


Child Protection and Safeguarding Policy

Version:	September 2025
Ratified by the Board of Trustees:	September 2025
To be reviewed annually:	September 2026



Head Teacher/Principal: Amjid Zaman

Designated Safeguarding Lead: Clair Nutt (Assistant Headteacher)

Deputy Designated Safeguarding Lead: Kathryn Croom (Welfare Lead), Christina McLaughlin (Assistant Headteacher, Aroosa Parveen (Assistant Headteacher) & Amjid Zaman (Headteacher)

Named Governor for Safeguarding: Carol Head

Chair of Governors: John Darch j.darch@kingsbury.thrive.ac

Trust CEO: Richard Chapman r.chapman@thrive.ac

Designated Lead for Looked After and Previously Looked-After Children: Christina McLaughlin (Assistant Headteacher)

Early Help Assessment Co-ordinator: Ellie Simms

Local Authority designated officer: Nina Farrimond & Beki Habbberley
Lado@coventry.gov.uk

Safeguarding in Education Adviser: Charlotte Hegarty
charlotte.hegaty@coventry.gov.uk

MASH: MASH@coventry.gov.uk or 024-76788555

MASH Education Representative: Claire McElroy claire.mcelroy@coventry.gov.uk

Prevent: Prevent@coventry.gov.uk

Emergency Duty Team: 024 7683 2222

Contents

1. Definitions.....	3
2. Introduction.....	3
3. Roles and Responsibilities.....	6
4. Types of Abuse.....	13
5. Responding to signs of abuse.....	20
6. Record-keeping.....	29
7. Photography and Images.....	30
8. Early Help Assessment.....	30
9. Staff Training.....	31
10. Safer Recruitment.....	33
11. Allegations of abuse against staff.....	34
12. Promoting safeguarding and welfare in the curriculum.....	37
13. Children Looked After.....	38
14. Children with Special Educational Needs and Disabilities (SEND) or physical health needs.....	39
15. Use of reasonable force	40
16. Alternative Provision.....	41
17. Use of school premises for non-school activities.....	43
18. Summary.....	44
19. Changes.....	4
Appendix A.....	4
Appendix B – Further Safeguarding information.....	4

1. Definitions

1.1 'Safeguarding' is defined in Keeping Children Safe in Education (2025) as;

- Providing help and support to meet the needs of children as soon as problems emerge
- protecting children from maltreatment whether inside or outside of the home, including online;
- preventing the impairment of children's mental and physical health or development;
- ensuring that children grow up in circumstances consistent with the provision of safe and effective care; and
- taking action to enable all children to have the best outcomes.

1.2 'Child Protection' is the intervention that occurs when children have been significantly harmed or are at risk of significant harm.

1.3 'Child' refers to everyone under the age of 18.

1.4 'Parent' refers to birth parents and other adults in a parenting role for example adoptive parents, stepparents and foster carers.

1.5 'Staff' or 'members of staff' refers to all teaching, non-teaching, support, supply, peripatetic, contract staff, governors, volunteers and trustees working in or on behalf of Kingsbury Academy.

1.6 Within this policy, we use the term 'victim', although it is recognised that not everyone considers themselves to be a victim or would want to be described in this way. We also recognise the importance of not using the terminology of 'perpetrator' in relation to children in cases where the behaviour can be harmful to both parties. The appropriate use of terminology will be determined on a case-by-case basis.

2. Introduction

2.1 We recognise that safeguarding, child protection, and promoting the welfare of children is an essential part of our duty of care to all students. As such, all staff and

governors have a responsibility to provide a safe environment in which children can learn. We understand that safeguarding, child protection and promoting the welfare of all children is everyone's responsibility and that everyone has a role to play in protecting children. We recognise that our school is part of a wider safeguarding system for children and work closely with other agencies to promote the welfare of children. We maintain an attitude of 'it could happen here' and will consider what is in the best interests of each child in line and upholding the Human Rights Act 1998 and Equality Act 2010. We encourage and welcome all feedback on this policy, from staff, pupils and parents.

2.2 The purpose of this policy is to;

- Promote safeguarding and child protection and to demonstrate Kingsbury Academy's commitment to keeping children safe;
- Provide all members of staff with the information required to meet their safeguarding duty and protect children from harm;
- Provide stakeholders with clear information relating to Kingsbury Academy's safeguarding and child protection procedures;
- Ensure that staff understand, can recognise and can respond to the indicators of abuse, exploitation or neglect;
- Ensure that all staff are aware of their mandatory reporting duty in relation to Section 5B of the Female Genital Mutilation Act 2003; and
- Ensure that children are protected from maltreatment or harm.

2.3 Kingsbury Academy is committed to the following principles;

- All children have the right to be protected from harm.
- Children should feel safe and secure and cannot learn unless they do so.
- All staff are responsible for keeping children safe and have a responsibility to act if they think a child is at risk of harm.
- All staff take on a responsibility to promote children's welfare
- Providing support to families and/or children as soon as a problem emerges is essential to improving outcomes for children and families.

2.4 Safeguarding aims:

2.4.1 The safeguarding aims of Kingsbury Academy, in line with Keeping Children Safe in Education (September 2025) are to;

- work to identify children who are suffering or likely to suffer abuse, exploitation or neglect and act to protect them;
- work with relevant services and agencies to ensure that children are protected from harm;
- provide a learning environment for children which is safe and secure;
- teach children how to keep themselves safe and provide structures for them to raise concerns if they are worried or at risk of harm;
- support children's mental health and wellbeing;
- ensure that we adhere to safer recruitment guidance and legislation, deal promptly with allegations of abuse against staff and take bullying and harassment seriously;
- train staff effectively in all safeguarding issues (including online safety) and in their responsibilities for identifying and protecting children that are or may be at risk of harm;
- have a designated safeguarding lead and designated deputies, who will provide support to staff, students and families;
- recognise that all children may be vulnerable to abuse, but be aware that some children have increased vulnerabilities due to special educational needs or disabilities or particular protected characteristics (LGBTQA+, Gender questioning etc);
- maintain a robust recording system for any safeguarding or child protection information;
- ensure that everyone in Kingsbury Academy understands the safeguarding procedures; and to
- regularly review policies and procedures to ensure that children are protected to the best of our ability.

2.5 This policy adheres to the following documents;

- [Keeping Children Safe in Education \(2025\)](#)
- [Working Together to Safeguard Children \(2023\)](#)

2.6 We continue to work closely with the Local Authority and the Coventry Safeguarding Children Partnership to safeguard children across the city.

2.7 Please note that there are a number of other documents (statutory and non-statutory) that inform our policy and practice. A list of these can be found in Annex B of Keeping Children Safe in Education (September 2025).

2.8 This policy should be read in conjunction with the following policies;

- Behaviour Policy
- Code of Conduct
- Attendance Policy
- Anti-Bullying Policy
- Whistleblowing Policy
- Prevent
- Acceptable use Policy
- RHE Policy
- Managing Medical Conditions
- Mental Health Policy

2.9 Scope

2.9.1 This policy applies to all teaching, non-teaching, support, supply, peripatetic, contract staff, governors, volunteers and trustees working in or on behalf of Kingsbury Academy (Thrive Education Partnership) All references in this document to 'staff', or 'members of staff' should be interpreted as relating to the aforementioned unless otherwise stated.

2.9.2 Rather than duplicating content from Keeping Children Safe in Education (September 2025) in this policy, it should be understood that Kingsbury Academy will always refer to this document as the benchmark for all safeguarding practice.

3. Roles and Responsibilities

3.1 The Role of the Governing Body

3.1.1 Governing bodies have a strategic leadership responsibility for our safeguarding arrangements. We have a senior board level lead role carried out by Carol Head. Part 2 of Keeping Children Safe in Education (September 2025) sets out the responsibilities of governing bodies. As part of these overarching responsibilities the Governing Body will;

- Have a strategic leadership responsibility for Kingsbury Academy safeguarding arrangements
- Aware of the obligations under the [Human Rights Act 1998](#) , the [Equality Act 2010](#) and the [Public Sector Equality Duty](#)
- Ensure that they comply with their duties under legislation;
- Ensure a whole school approach to safeguarding, including the use of mobile and smart technology in school;
- Ensure that policies, procedure and training are effective and comply with the law at all times and that they allow concerns to be responded to in a timely manner;
- Ensure the school consider local authority and Coventry Safeguarding Children Partnership policies and supply information as requested by the safeguarding partners (the Local Authority, a clinical commissioning group for an area within the local authority and the chief office of police for a police area within the local authority);
- Ensure the school have an effective child protection policy, that it is published on the school website <https://www.kingsbury.thrive.ac/> or available via contacting the school office and review this annually;
- Ensure the school have a staff behaviour policy or Code of Conduct which refers to low level concerns, allegations against staff and whistleblowing procedures alongside acceptable use of technologies;
- Ensure that all staff and governors undergo safeguarding and child protection training on induction (including online safety and filters and monitoring processes) and this is regularly updated;
- Ensure the school contribute to multi-agency working in line with statutory guidance;
- Ensure that there are clear systems and processes in place for identifying when children may be experiencing mental health problems;
- Ensure that children are taught about safeguarding, including online safety as a whole school approach and curriculum planning but recognising that a one size fits all approach may not be appropriate for all children. See section 12 of this policy for further information;
- Put in place and follow appropriate safeguarding responses for children who are absent from education;

- Appoint an appropriate member of staff from the senior leadership team to the role of Designated Safeguarding Lead;
- Understand the local criteria for action and local protocol for assessment;
- Recognise the importance of information sharing between practitioners and local agencies but take a risk-based approach to level of information that is provided to temporary staff, volunteers and contractors;
- Ensure that appropriate filters and monitoring systems are in place to keep children safe online and share information regarding online abuse and risks including where to access advice with parents and carers;
- Respond to allegations of abuse against the headteacher whilst ensuring there are procedures in place to manage safeguarding concerns or allegations against staff (including supply staff, volunteers and contractors); and
- Ensure safer working practice is embedded and effective within policies.

3.2. The Role of the Headteacher

3.2.1 The headteacher will;

- Ensure that this policy is reviewed annually at minimum and ratified by the governing body;
- Ensure that this policy and associated procedures are adhered to by all staff;
- Ensure that all staff are made aware of the named governor for safeguarding and the Designated Safeguarding Lead;
- Ensure that the role of 'Designated Safeguarding Lead' is explicit in the role-holder's job description including leading on filters and monitoring processes;
- Decide whether to have one or more deputy safeguarding leads and ensure they are trained to the same standard as the Designated Safeguarding Lead;
- Organise appropriate cover for the role of Designated Safeguarding Lead for any out of hour/out of term activities;
- Appoint a 'Designated Teacher for Looked-After and Previously Looked-After Children' to promote the educational achievement of children looked after;
- Appoint a lead for online safety; (DSL will still retain ultimate responsibility for this)
- Promote a whole school approach to safeguarding;
- Promote resilience to social and emotional wellbeing, which is tailored to the needs of the children;

- Ensure that all recruitment follows the 'Safer Recruitment' guidance and a single, central record is maintained with details of all members of staff who are in contact with children;
- Respond to low level concerns and allegations of abuse against all other members of staff including supply staff, volunteers and contractors;
- Refer cases where a person is dismissed or left due to risk/harm to a child to the Disclosure and Barring Service and Teaching Regulation Agency as required;
- Ensure that the school collaborates with Children's Services, the Police, Health services and other services to; promote the welfare of children; provide a co-ordinated offer of early help assessments when need is identified; contribute to inter-agency plans for children subject to children protection plans and to protect children from harm;
- Safeguard children's wellbeing and maintain public trust in the teaching profession as part of their professional duties (Teaching Standards, 2012); and
- Ensure that children's Services (from the host local authority or placing authority) have access to Kingsbury Academy to conduct, or to consider whether to conduct a section 47 or section 17 assessment, as per Keeping Children Safe in Education (September 2025).

3.3 The Role of the Designated Safeguarding Lead

3.3.1 The Designated Safeguarding Lead (DSL) for Kingsbury Academy is Clair Nutt. Our Deputy Designated Safeguard Lead's (DDSL's) in the DSL's absence are Christina McLaughlin, Kathryn Croom, Aroosa Parveen and Amjid Zaman.

The Designated Safeguarding Lead will;

- Take overall lead responsibility for safeguarding and child protection (including online safety and filters and monitoring);
- Liaise with the safeguarding partners and work with other agencies in line with Working Together to Safeguard Children (2023);
- Always be available during term time school hours for staff in Kingsbury Academy to discuss safeguarding concerns. If they are not available, a deputy will be made available;
- Undergo training to provide them with the knowledge and skills required to carry out this role updated a minimum of biannually;

- Act as a source of support and expertise on matters relating to safeguarding and child protection to ensure that other members of staff can carry out their safeguarding duty;
- Be best placed to advise on the response to safeguarding concerns;
- Identify if children may benefit from early help;
- Act as a point of contact with the safeguarding partners;
- Make referrals to Coventry's Multi-Agency Safeguarding Hub (MASH) where children have been harmed or are at risk of significant harm;
- Make referrals to the Channel programme where there is a radicalisation concern and/or support staff that make a referral to Channel;
- Support the school with regards to their responsibilities under the Prevent duty and provide advice and support on protecting children from radicalisation;
- Refer cases to the police where a crime may have been committed¹;
- Ensure all staff have read and understood Part 1 and/or Annex A of Keeping Children Safe in Education, all staff working directly with children should read KCSIE Annex B (September 2025);
- Update their knowledge and skills regularly and keep up with any developments relevant to their role;
- Provide staff in school with the knowledge, skills and support required to safeguard children;
- Take responsibility for the accurate and timely recording of safeguarding and child protection concerns and take overall responsibility for safeguarding and child protection files;
- Take responsibility for the transfer of safeguarding files when a child leaves Kingsbury Academy;
- Attend or ensure an appropriate representative attends multi-agency safeguarding or child protection meetings;
- Promote supportive engagement with parents and/or carers in safeguarding and promoting the welfare of children;
- Work closely with other relevant education professionals (e.g. SENCO, Virtual School Head) to ensure children with additional vulnerabilities are safeguarded;
- Help to promote educational outcomes of child who have experienced or are experiencing safeguarding or child protection issues by sharing relevant information with teachers and the school leadership team;

- Promote a 'culture of safeguarding', in which every member of Kingsbury Academy community acts in the best interests of the child;
- Ensuring Kingsbury Academy knows who its cohort of children or have or have had a social worker are, understanding their academic progress and attainment, and maintaining a culture of high aspirations;
- Regularly meet (every half term at a minimum) with the safeguarding link governor and/or Chair of Governors to review safeguarding in Kingsbury Academy; and
- Liaise with the headteacher regarding safeguarding cases and issues.
- Liaise with the senior mental health lead when safeguarding concerns are linked to mental health
- Be Aware of the requirement for children to have an Appropriate Adult – PACE code C 2019

3.3.2 Further details on the role of the Designated Safeguarding Lead can be found in Annex C of Keeping Children Safe in Education (September 2025).

3.4 The Role & Responsibilities of all Staff within School:

3.4.1 School staff play a particularly important role because they are in a position to identify concerns early in order to provide help for children. All staff in Kingsbury Academy;

- Have a responsibility to provide a safe environment, where children can learn;
- Will be able to identify indicators of abuse, exploitation or neglect; with an awareness of safeguarding issues that put children at risk of harm and behaviours associated with these risks;
- Should know what to do if a child tells them that he/she is being abused, exploited or neglected but that children may not feel ready or know how to tell someone that they are being abuse, exploited or neglected and/or recognise their experience as harmful;
- Will be aware of indicators of child-on-child abuse and procedures to deal with this;
- All staff, but especially the DSL and deputies, will also consider whether children are at risk of abuse or exploitation in situations outside their families;
- Will be made aware of; the safeguarding and child protection policy; the school behaviour policy; the staff behaviour policy; information about the safeguarding response to children missing in education; the role of the designated

safeguarding lead and systems in Kingsbury Academy that support safeguarding and child protection;

- Will be provided with a copy of Part 1/Annex A of Keeping Children Safe in Education (September 2025) annually and receive annually updated training on their safeguarding roles and responsibilities;
- Will receive regularly updated safeguarding and child protection training including online safety;
- Will receive safeguarding updates throughout the year as part of continuous professional development;
- Should be able to contribute to the development of safeguarding policy and practice;
- Will be made aware of the early help assessment process and understand their role in it;
- Should be prepared to identify children who may benefit from early help and will discuss early help requirements with the safeguarding lead in the first instance;
- May be required to support social workers and other agencies following a referral;
- Will be made aware of the process for making referrals to Children's Services (through the MASH), understand statutory assessments and the role that they may be expected to play in such assessments;
- Should be prepared to make referrals to the MASH if they have concerns about a child's welfare and understand the role that they may be expected to play in such assessments;
- Understands the referral process to the (LADO) and the role they play should they have concerns or allegations are made against any member of staff;
- Should always seek advice from the Designated Safeguarding Lead if they are unsure; and
- All teachers should safeguard children's wellbeing and maintain public trust in the teaching profession as part of their professional duties (Teaching Standards, 2012).

3.5 Multi-Agency Working:

3.5.1 The school is committed to multi-agency working and operates under Working Together to Safeguard Children (2018) and local safeguarding arrangements.

3.5.2 The school will work with Children's Services the Police, Health services, local Early Help practitioners and other relevant agencies to promote the welfare of children and protect them from harm.

3.5.3 We work closely with our local Family Hub to ensure children receive appropriate, co-ordinated Early Help Assessments; Kingsbury Academy's Local Hub is **Pathways Hub** our **EHAC** is **Ellie Simms**.

3.5.4 The Coventry Safeguarding Children Partnership (CSCP) have designated that schools and colleges are a named 'relevant agency'. As such, the school is under a statutory duty to co-operate with published CSCP arrangements.

4. Types of abuse

4.1 As outlined above, all staff will be trained in indicators of abuse, exploitation and neglect and should be able to recognise signs of these. We recognise that abuse, exploitation and neglect along with other safeguarding issues are complex and often multidimensional and therefore don't fall solely under one category. Types of abuse or harm can take many forms including directly inflicting harm on a child or failing to protect a child from harm online as well as face to face both inside and outside of the school as well as online, including the multi-faceted occurrence of factors causing emotional harm. In many cases abuse and other risks will take place concurrently both online and offline.

The four main types of abuse that staff are trained to recognise are;

- Physical abuse;
- Sexual abuse;
- Emotional abuse;
- Neglect.

4.2 Types of abuse (Taken from Keeping Children Safe in Education, 2025)

Type of abuse	Information
Abuse	A form of maltreatment of a child. Somebody may abuse or neglect a child by inflicting harm, or by failing to act to prevent harm. Harm can include ill treatment that is not physical as well as the impact of witnessing ill treatment of others. This can be particularly relevant, for example, in relation to the impact on children of all forms of domestic abuse.

	<p>Children may be abused in a family or in an institutional or community setting by those known to them or, more rarely, by others. Abuse can take place wholly online, or technology may be used to facilitate offline abuse. Children may be abused by an adult or adults, or another child or children.</p>
Physical abuse	<p>A form of abuse which may involve hitting, shaking, throwing, poisoning, burning or scalding, drowning, suffocating or otherwise causing physical harm to a child. Physical harm may also be caused when a parent or carer fabricates the symptoms of, or deliberately induces, illness in a child.</p>
Emotional abuse	<p>The persistent emotional maltreatment of a child such as to cause severe and persistent adverse effects on the child's emotional development. It may involve conveying to a child that they are worthless or unloved, inadequate, or valued only insofar as they meet the needs of another person. It may include not giving the child opportunities to express their views, deliberately silencing them or 'making fun' of what they say or how they communicate. It may feature age or developmentally inappropriate expectations being imposed on children. These may include interactions that are beyond a child's developmental capability, as well as overprotection and limitation of exploration and learning, or preventing the child participating in normal social interaction. It may involve seeing or hearing the ill-treatment of another. It may involve serious bullying (including cyber bullying), causing children frequently to feel frightened or in danger, or the exploitation or corruption of children. Some level of emotional abuse is involved in all types of maltreatment of a child, though it may occur alone.</p>

Sexual abuse	<p>Involves forcing or enticing a child or young person to take part in sexual activities, not necessarily involving violence, whether or not the child is aware of what is happening. The activities may involve physical contact, including assault by penetration (for example, rape or oral sex) or non-penetrative acts such as masturbation, kissing, rubbing and touching outside of clothing. They may also include non-contact activities, such as involving children in looking at, or in the production of, sexual images, watching sexual activities, encouraging children to behave in sexually inappropriate ways, or grooming a child in preparation for abuse. Sexual abuse can take place online, and technology can be used to facilitate offline abuse. Sexual abuse is not solely perpetrated by adult males. Women can also commit acts of sexual abuse, as can other children.</p> <p>The sexual abuse of children by other children is a specific safeguarding issue in education and all staff should be aware of this and of Kingsbury Academy policy and procedures for dealing with this.</p>
Neglect	<p>The persistent failure to meet a child's basic physical and/or psychological needs, likely to result in the serious impairment of the child's health or development. Neglect may occur during pregnancy, for example, as a result of maternal substance abuse. Once a child is born, neglect may involve a parent or carer failing to: provide adequate food, clothing and shelter (including exclusion from home or abandonment); protect a child from physical and emotional harm or danger; ensure adequate supervision (including the use of inadequate caregivers); or ensure access to appropriate medical care or treatment. It may also include neglect of, or unresponsiveness to, a child's basic emotional needs.</p>

4.3 Indicators of abuse can be found in Appendix B.

4.4 If a child is in immediate danger or at risk of harm, a referral will be made to children's services (through the MASH) and any member of staff can make this referral. A Designated or Deputy Designated Safeguarding Lead should be available at all times, but in exceptional circumstances the member of staff should speak to a member of the Senior Leadership Team or seek advice directly from Children's Service and then

take appropriate action. The Designated Safeguarding Lead should be made aware as soon as possible.

4.5 Staff, parents and the wider community should report any concerns that they have about the welfare of children, however minor or seemingly insignificant. Staff should not assume that someone else will report concerns.

4.6 The school recognises that any child can be the victim of abuse and may benefit from early help. However, the school will be particularly vigilant to potential need for early help if a child;

- is disabled or has certain health conditions and has specific additional needs;
- has special educational needs (whether or not they have a statutory education, health and care plan);
- Has experienced multiple suspensions, is at risk of being permanently excluded from schools, colleges and in alternative provision or a pupil referral unit
- has a mental health need;
- is a young carer;
- is showing signs of being drawn in to anti-social or criminal behaviour, including gang involvement and association with organised crime groups or county lines;
- is frequently missing/goes missing from care or from home;
- is a risk of modern slavery, trafficking, sexual or criminal exploitation;
- is misusing drugs or alcohol themselves;
- has a family member in prison, or is affected by parental offending;
- is in a family circumstance presenting challenges for the child, such as substance abuse, adult mental health problems or domestic abuse;
- has returned home to their family from care;
- is showing early signs of abuse and/or neglect;
- is at risk of being radicalised or exploited;
- is at risk of 'honour-based' abuse such as Female Genital Mutilation or Forced Marriage;
- is persistently absent from education, including persistent absences for part of the school day.
- is a privately fostered child.

4.7 Kingsbury Academy recognises that abuse can take many different forms. Staff will also receive training on the following issues and action will be taken if Kingsbury Academy believes that a child is at risk of or is the victim of;

- bullying, including cyberbullying, prejudice based and discriminatory
- child criminal exploitation and sexual exploitation (including involvement in county lines);
- domestic abuse;
- emotional abuse;
- fabricated or induced illness;
- faith-based abuse;
- female genital mutilation;
- forced marriage;
- gangs or youth violence;
- gender-based violence;
- hate;
- mental health;
- neglect;
- peer on peer abuse;
- physical abuse;
- radicalisation;
- relationship abuse;
- serious violence and harassment;
- sexual abuse;
- sexual violence or sexual harassment (including peer on peer abuse);
- sharing of consensual or non-consensual nude and semi-nude images/videos;
- So-called 'honour-based' abuse;
- trafficking and modern slavery.

4.8 Kingsbury Academy will also take action to protect;

- Children missing education;
- Children missing from home or care.

4.8.1 There are other familial issues that can have a detrimental impact on children.

We work with other agencies in line with Keeping Children Safe in Education (2025) to support children and families in the following circumstances;

- Children facing the court procedures and/or children in the court system;
- Children with family members in prison;
- Children who are homeless;

- Children who need a social worker.

4.9 Children potentially at greater risk of harm

4.9.1 Kingsbury Academy recognises that some children need a social worker due to abuse, neglect or complex family circumstances and that abuse and trauma can leave children vulnerable to further harm, as well as educational disadvantage.

4.9.2 The Designated Safeguarding Lead will hold information relating to social workers working with children in the school.

4.9.3 This information will inform decisions about safeguarding and promoting welfare (including the provision of pastoral and/or academic support).

4.10 Children absent from Education

4.10.1 Kingsbury Academy understands that children being absent from education for prolonged periods and/or repeat occasions can act as a vital warning sign to a range of safeguarding issues including neglect, child sexual and criminal exploitation – particularly county lines.

4.10.2 Kingsbury Academy will report information to the Local Authority when problems are first emerging and if there is a need for the removal of a child from roll.

4.11 Elective Home Education

4.11.1 Kingsbury Academy recognises that home educated children may have a positive learning experience and the decision is one with the child's best interests at heart however elective home education can mean that some children are not in receipt of suitable education.

4.11.2 Since 2016, Kingsbury Academy has a statutory duty to inform the Local Authority of all deletions from roll. When Elective Home Education is the reason for this removal, the Local authority and other key professionals will work alongside Kingsbury Academy to coordinate a meeting with parents where possible ideally before a final decision is made.

4.12 Children requiring Mental Health support:

4.12.1 The school recognise that safeguarding and promoting the welfare of children includes preventing the impairment of children's mental health or development.

4.12.2 All staff will be aware that mental health problems may be an indicator that a child is suffering or is at risk of suffering abuse, neglect or exploitation.

4.12.3 Staff will not attempt to make a diagnosis of a mental health problem unless they are appropriately trained.

4.12.4 We recognise that staff are well-placed to observe behaviour that may indicate that a child is experiencing a mental health problem or is at risk of developing one. There are clear systems and processes in place for identifying possible mental health problems. If staff are concerned that a child is suffering a mental health problem, they should liaise with the Mental Health Lead (Clair Nutt), or in the absence of the Mental Health Lead liaise with Mental Health Champions Kathryn Croom and Lindsey Quinn. If necessary, this should be escalated through to the Headteacher.

4.12.5 If staff are concerned that a child is experiencing a mental health problem that is also a safeguarding concern, they must report this to the Designated Safeguarding Lead (or deputy Designated Safeguarding Lead) immediately.

4.12.6 Mental Health Lead Clair Nutt is responsible for the promotion of mental health and wellbeing across Kingsbury Academy. Further information can be found in Kingsbury Academy Mental Health Policy.

4.12.7 Further information, guidance and advice regarding mental health can be found on page 50 of Keeping Children Safe in Education 2025.

4.13 Children who are Lesbian, Gay, Bi (LGBTQA+) or may be gender questioning children:

4.13.1 The fact that a child or a young person may be LGBT is not in itself an inherent risk factor for harm. However, children who are LGBT can be targeted by other children. In some cases, a child who is perceived by other children to be LGBT (whether they are or not) can be just as vulnerable as children who identify as LGBT.

4.13.2 In line with updated Keeping Children Safe In Education (2025) guidance, it is important to consider the Cass review, which identified that caution is necessary for children questioning their gender as there remain many unknowns about the impact of social transition and children may well have wider vulnerabilities, including having complex mental health and psychosocial needs, and in some cases additional diagnoses of autism spectrum disorder and/or attention deficit hyperactivity disorder.

4.13.3 It recommended that when families/carers are making decisions about support for gender questioning children, they should be encouraged to seek clinical help and advice. When parents are supporting pre-pubertal children, clinical services should ensure that they can be seen as early as possible by a clinical professional with relevant experience.

4.13.4 As such, when supporting a gender questioning child, schools should take a cautious approach and consider the broad range of their individual needs, in partnership with the child's parents (other than in the exceptionally rare circumstances where involving parents would constitute a significant risk of harm to the child), including any clinical advice that is available and how to address wider vulnerabilities such as the risk of bullying. Schools should refer to our Guidance for Schools and Colleges in relation to Gender Questioning Children, when deciding how to proceed.

4.13.5 Risks can be compounded where children who are LGBT lack a trusted adult with whom they can be open. It is therefore vital that staff endeavour to reduce the additional barriers faced and provide a safe space for them to speak out or share their concerns with members of staff.

4.13.6 LGBT inclusion is part of the statutory Relationships Education, Relationship and Sex Education and Health Education curriculum and there is a range of support available to help schools counter homophobic, biphobic and transphobic bullying and abuse.

5. Responding to signs of abuse

5.1 If a member of staff, parent or member of the public is concerned about a child's welfare, they should report it to the designated safeguarding lead as soon as possible. On occasions when the designated safeguarding lead is not available, it should be

reported to the deputy safeguarding lead without delay. Although any member of staff can make a referral to Children's Services where possible there should be a conversation with the Designated Safeguarding Lead.

5.2 If anyone other than the Designated Safeguarding Lead makes a referral to Children's Services or to the police, they should inform the DSL as soon as possible.

5.3 All staff will be alert to indicators of abuse and will report any of the following to the Designated Safeguarding Lead immediately;

- Any concern or suspicion that a child has sustained an injury outside what is reasonably attributable to normal play;
- Any concerning behaviours exhibited by children that may indicate that they have been harmed or are at risk of harm, including unusual changes in mood or behaviour, concerning use of language and/or concerning drawings or stories.
- Any significant changes in attendance or punctuality;
- Any significant changes in a child's presentation;
- Any concerns relating to people who may pose a risk of harm to a child; and/or
- Any disclosures/allegations of abuse that children have shared.

5.4 There will be occasions where a child discloses/alleges abuse directly to a member of staff. If this happens, the member of staff will;

- listen carefully to the child and believe what they are saying;
- not promise confidentiality, as information may need to be passed on so the child and family can receive additional support;
- only ask for clarification if something is unclear and will not ask 'leading' questions;
- report disclosure to the designated safeguarding lead as soon as possible, certainly by the end of the day;
- only discuss the issue with colleagues that need to know about it; and
- will write up the disclosure and pass it to the designated safeguarding lead. It is likely they will have had a discussion with the DSL prior to this but delay should be avoided.

5.5 The designated safeguarding lead will make a decision about the action that needs to be taken following a member of staff raising a concern about a child, or following a direct disclosure recording a clear rationale. The DSL may consider the following options;

- Managing support for the child internally within school;
- Seek advice from the social worker advice line in the MASH;
- Instigate single agency intervention and work directly with the family to improve the situation;
- Offer an Early Help Assessment to provide multi-agency help to a family;
- In cases where children are deemed to be at significant risk of harm, the DSL will refer cases to the MASH for consideration for statutory intervention. Parental consent will be obtained wherever possible before referring cases to the MASH. However, if Kingsbury Academy is worried that telling parents will mean the child is at greater risk of harm, we may do this without informing them.
- If parents do not consent to a referral but the school believes that a child is at significant risk of harm, a referral will still be made to Children's Services.

5.6 For further information about the Coventry Safeguarding Children Partnership's 'Right Help, Right Time' guidance, which is used by Kingsbury Academy to make decisions about protecting children, please visit [Effective support for children and families – Coventry City Council](#)

5.7 See page 29 for flowchart of actions that will be taken where there are concerns about a child (taken from Keeping Children Safe in Education, September 2025).

5.8 In cases where members of staff become aware that Female Genital Mutilation (FGM) has been carried out on a female below the age of 18, they have a mandatory duty to report this to the police without delay and will do so. Staff should refer this to the DSL first, but the legislation requires regulated health and Children's Service professionals and teachers in England and Wales to make a report to the police where, in the course of their professional duties, they either;

- are informed by a girl under 18 that an act of FGM has been carried out on her;
or
- observe physical signs which appear to show that an act of FGM has been carried out on a girl under 18 and they have no reason to believe that the act was necessary for the girl's physical or mental health or for purposes connected with labour or birth.

If you believe a child is at risk of FGM, a referral to the MASH is also required.

5.9 Kingsbury Academy has a duty to refer any children who are living in a private fostering arrangement to the local authority. Private fostering is when a child under the

age of 16 (or under 18 if disabled) is cared for by someone who is not their parent or a close relative. This is a private arrangement made between a parent and a carer, expected to last 28 days or more, or the school are aware the 28 days has been exceeded.

5.10 All schools are subject to a duty under section 26 of the Counter-Terrorism and Security Act 2015 in the exercise of their functions to have “due regard” to the need to prevent people from being drawn into terrorism. See Appendix B for further information on Kingsbury Academy's Prevent duty.

5.11 If any member of staff is unsure about signs of abuse or neglect, they should speak to the Designated Safeguarding Lead.

5.12 Child on Child Abuse

5.12.1 Kingsbury Academy understands that both adults and other children can perpetrate abuse, and can happen inside and outside of school, online or face to face. Child on Child abuse is taken very seriously and can include bullying (including cyber-bullying, prejudice-based and discriminatory bullying), abuse in intimate personal relationships between children, physical abuse, sharing of consensual or non-consensual images of videos, causing someone to engage in sexual activity without consent, sexual violence and/or harassment, upskirting, and initiation/hazing ceremonies. Kingsbury Academy recognise that safeguarding issues can manifest as child-on-child abuse. Child on child abuse (including sexual violence and sexual harassment) is recorded via Kingsbury Academy Safeguarding and behaviour recording systems (CPOMS and Arbor) and further information is detailed in Thrive Education Partnership Sexual Harassment Policy and Kingsbury Academy Behaviour Policy.

5.12.2 All members of staff will be made aware of Kingsbury Academy's policy and procedures with regards to child-on-child abuse. Kingsbury Academy will ensure staff understand what is meant by child-on-child abuse and the school policy on child-on-child abuse by covering processes within mandatory child protection and safeguarding training. Child-on-child policies and procedures will be displayed on the Safeguarding noticeboard and referred to within regular safeguarding and updates.

5.12.3 Kingsbury Academy will work to prevent child-on-child abuse by promoting and teaching positive, respectful relationships within the PSHE(RHE) Curriculum and

promoting and teaching pro social behaviours following guidelines and practice stated in our behaviour policy and through the use of Positive Behaviour Support.

5.12.4 Although it is recognised that if there are no reported cases, such abuse may still be taking place. If an allegation of child-on-child abuse is made, Kingsbury Academy will investigate this. Initial response to be documented on CPOMS and Arbor where child-on-child abuse is recorded. Investigation recorded via CPOMS (including outcomes). This process is documented within CPOMS user guide for staff.

5.12.5 In the event that an allegation of child-on-child abuse is made, victims, alleged perpetrators and any other children affected will be supported by the DSL's and Pastoral Team. Parents will be informed and referral to the MASH will be considered. All actions will be recorded within CPOMS.

5.12.6 Kingsbury Academy will never pass off child on child abuse as 'banter', 'having a laugh', 'part of growing up' or other such termination that does not recognise the harm caused. This should be a Zero-tolerance approach as this could lead to a culture of unacceptable behaviours. It is recognised with this, that all child-on-child abuse is unacceptable and will be taken seriously.

5.12.7 Kingsbury Academy will adhere to guidance set out in Keeping Children Safe in Education (2025) when responding to incidents of child-on-child abuse.

5.12.8 All staff will be made aware that 'upskirting' is a criminal offence.

5.13 Child Sexual Exploitation (CSE) and Child Criminal Exploitation (CCE)

5.13.1 Both CCE and CSE are forms of abuse that occur when an individual or group take advantage of an imbalance in power to coerce, manipulate or deceive a child into taking part in sexual or criminal activity, in exchange for something the victim needs or wants, and/or for the financial advantage or increased status of the perpetrator through violence or threat of violence. CCE and CSE can affect both males and females and can include children that have been moved for the purpose of exploitation (trafficking).

5.13.2 CCE can include children being forced or manipulated into transporting drugs or money through county lines, working in cannabis factories, shoplifting or pickpocketing, vehicle crime, threatening violence on others or even carrying weapons.

5.13.3 The school is responsible for recognising children involved in CCE are victims of exploitation and should be recognised as such due to the harm they have experienced even if they appear to have consented to the criminal activity.

5.13.4 CSE is a form of child sexual abuse including physical contact and non-contact online activities including the internet or by phone. This can happen over time or as a one off and may happen without the child recognising this as abuse or harmful.

5.13.5 The school recognises that children of the age of 16 and 17 who can legally consent to a sexual relationship may also be the victims of CSE but may not recognise this.

5.13.6 Kingsbury Academy understands children can be at risk of, or involved in, serious violent crime. This can result in an increased absence from school or college, a change in friendships, decline in educational attainment/engagement, significant changes in wellbeing, or signs of unexplained injuries.

5.14 Sharing of consensual or non-consensual nude and semi-nude images or videos

5.14.1 "Sharing of consensual or non-consensual nude and semi-nude images or videos" refers to any sharing of youth-produced sexual imagery between children.

This includes;

- A person under the age of 18 creating and sharing sexual imagery of themselves with a peer under the age of 18;
- A person under the age of 18 sharing sexual imagery created by another person under the age of 18 with a peer under the age of 18 or an adult;
- A person under the age of 18 being in possession of sexual imagery created by another person under the age of 18.

5.14.2 The school has a responsibility to educate children in the risks relating to 'sharing consensual or non-consensual nude images or videos' and how to keep themselves safe online. Kingsbury Academy PSHE (RHE) Policy

5.14.3 Any incidents or suspected incidents of 'sharing consensual or non-consensual nude images or videos' should be reported to the DSL without delay.

5.14.4 Once reported to the DSL, the DSL will decide on the appropriate course of action. This could include;

- Referrals to the MASH in regard to all parties involved (also the police if an urgent response required);
- Confiscation of mobile phones in line with guidance 'Searching, Screening and Confiscation, (January 2018);
- Support for young people involved to prevent reoccurrence;
- Sanctions in accordance with the behaviour policy;

5.14.5 Any incidents of 'sharing consensual or non-consensual nude images or videos' involving the following will result in a MASH and sometimes a Police referral;

- Adult involvement;
- Coercion or blackmail;
- Children under the age of 13;
- Extreme, or violent content;
- Immediate risk of harm.

5.14.6 Staff will not view images or videos on pupil devices. Confiscated devices will be stored securely and passed to the relevant agencies.

5.14.7 We will work with parents as necessary if their child is involved in the sharing of consensual or non-consensual nude images or videos.

5.14.8 We operate a culture of safeguarding and young people should feel confident to disclose if they have sent an inappropriate image of themselves. Children will always be supported to retrieve and delete the images.

5.15 Domestic Abuse

5.15.1 Domestic abuse can be a single incident or a pattern of incidents. It can also include psychological, physical, sexual, financial or emotional acts of abuse.

5.15.2 The school recognises that children can be a victim of Domestic Abuse by seeing, hearing or experiencing the effects or suffering domestic abuse in their own personal relationships. These all have a detrimental impact on children's health, well-being, development and ability to learn. Kingsbury Academy works closely with police via Operation Encompass and also has a robust attendance system including first day calling and home visits.

5.16 Searching, Screening and Confiscation

5.16.1 Where necessary, searching, screening and confiscation will be used to safeguard a child/children in Kingsbury Academy.

5.16.2 The school adheres to 'Searching, Screening and Confiscation: Advice for Schools (January 2018).

5.17 Online Safety

5.17.1 The school recognises that in today's world, children need to be safeguarded from potentially harmful and inappropriate online material with many children having unlimited and unrestricted access to the internet via their mobile phone. The breadth of issues can be categorised currently into four areas of risk as taken from Keeping Children Safe In Education 2025:

- Content – being exposed to illegal, inappropriate, or harmful content (pornography, fake news, racism, misogyny, self-harm, suicide, anti-Semitism, radicalisation, extremism, misinformation, disinformation (including fake news and conspiracy theories)
- Contact – being subject to harmful online interaction with other users (peer to peer pressure, commercial advertising and adults posing as children or young adults with the intention to groom or exploit)
- Conduct – online behaviour that increases the likelihood of, or causes, harm (making, sending and receiving explicit images)
- Commerce – risks such as online gambling, inappropriate advertising, phishing and or financial scams

5.17.2 The school understand that the above can take place on a pupil's phone or smart device (including smart watches, smart glasses and 'air tags') whilst at school or elsewhere. The school have responded to this by having a whole school approach to online safety which aims to protect and educate students, parents and staff in their use of technology:

- Behaviour Policy
- Acceptable use policy
- Online Safety

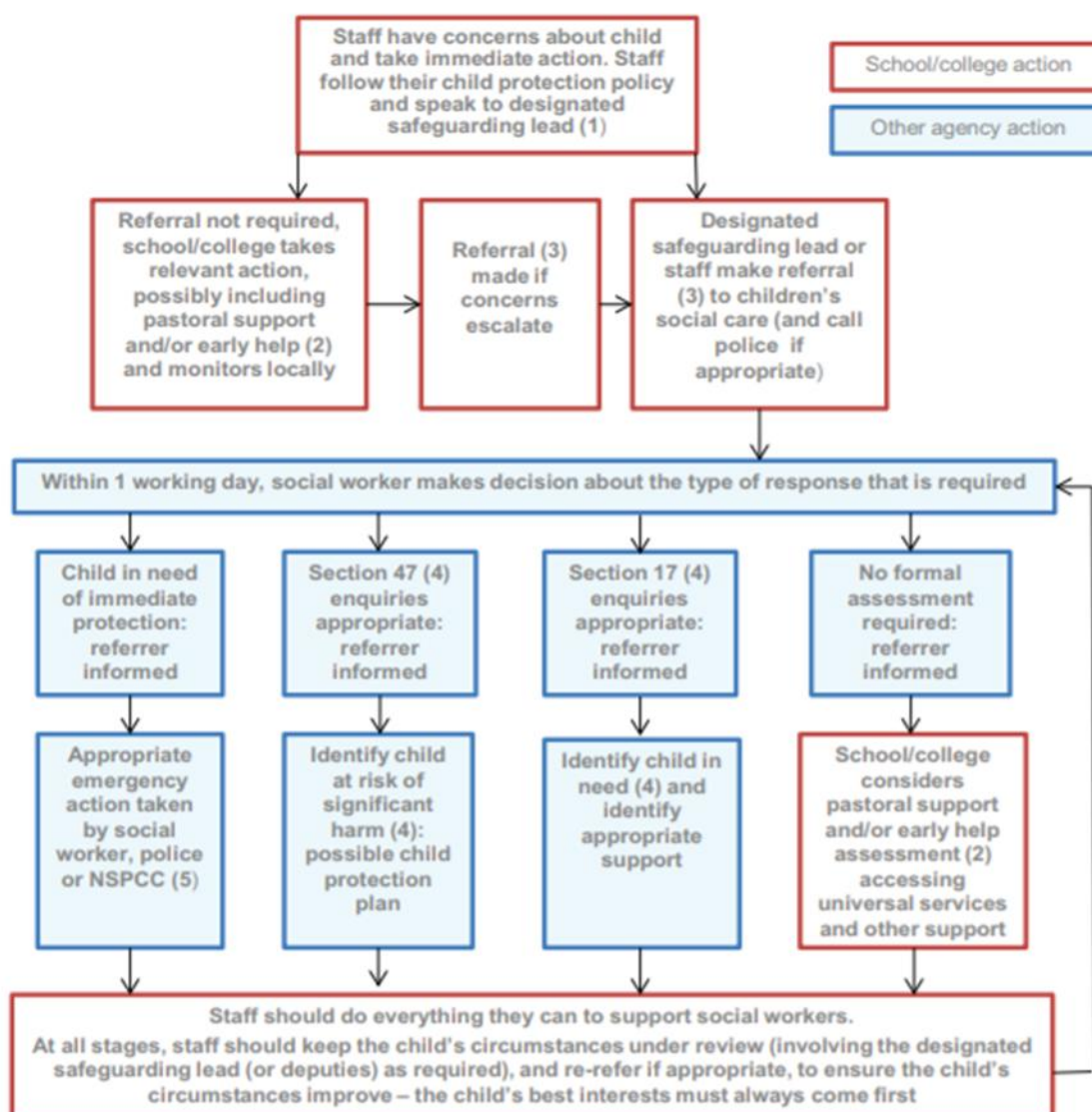
5.17.3 The school has also established mechanisms to identify, intervene in and escalate any concerns highlighted through our filter and monitoring systems for both staff and pupils. The effectiveness of this is regularly reviewed with staff aware of how to escalate concerns.

- **Monitoring and Filtering Systems:** Kingsbury Academy filtering system is **London Grid for Learning**, blocking inappropriate and harmful content online. **Classroom Cloud** is Kingsbury Academy's monitoring system; the platform helps filter online content and manage access to websites and applications. It provides alerts for potentially concerning online behavior. DSL Clair Nutt and Headteacher Amjid Zaman (DDSL) receive alerts and action appropriately.
- **DSL** takes lead responsibility for filtering and monitoring reports.
- **SLT** ensures that staff understand their roles and responsibilities, reviews the effectiveness of systems and overseas reports.
- **IT support** (Mark Clark) has technical responsibility for maintaining and managing the school system.

Staff should report to the DSL if;

- Staff witness or suspect unsuitable material has been accessed
- Pupils/staff can access unsuitable material
- When staff are teaching topics that could create unusual activity on the filtering logs
- There is failure in the software or abuse of the system
- If there are some unreasonable restrictions that affect teaching and learning or administrative tasks
- They notice abbreviations or misspellings that allow access to restricted material

Actions where there are concerns about a child



(1) In cases which also involve a concern or an allegation of abuse against a staff member, see Part four of this guidance.

(2) Early help means providing support as soon as a problem emerges at any point in a child's life. Where a child would benefit from co-ordinated early help, an early help inter-agency assessment should be arranged. Chapter one of [Working Together to Safeguard Children](#) provides detailed guidance on the early help process.

(3) Referrals should follow the process set out in the local threshold document and local protocol for assessment. Chapter one of [Working Together to Safeguard Children](#).

(4) Under the Children Act 1989, local authorities are required to provide services for children in need for the purposes of safeguarding and promoting their welfare. Children in need may be assessed under section 17 of the Children Act 1989. Under section 47 of the Children Act 1989, where a local authority has reasonable cause to suspect that a child is suffering or likely to suffer significant harm, it has a duty to make enquiries to decide whether to take action to safeguard or promote the child's welfare. Full details are in Chapter one of [Working Together to Safeguard Children](#).

(5) This could include applying for an Emergency Protection Order (EPO).

5.18 To raise concerns about children, members of staff should contact the Multi-Agency Safeguarding Hub (MASH) by telephone to discuss the referral. They should then complete the online Multi-Agency Referral Form (MARF) and submit this to the MASH. The school will follow up referrals if we do not receive feedback from Children's Services to ascertain the outcome of all referrals.

MASH Telephone number: 02476 788 555

MASH online referral form: <http://www.coventry.gov.uk/safeguardingchildren>

Out of hours Emergency Duty Team: 02476 832 222

Prevent/Channel Referrals: Refer to MASH (mash@coventry.gov.uk) and to CTU_GATEWAY@west-midlands.pnn.police.uk

5.18.1 If a child's situation does not appear to be improving following a referral, the school may re-refer the child. We will also consider using the [Coventry Safeguarding Children Partnership's Managing Professional Disagreements policy](#) to ensure that our concerns have been addressed and that the situation improves for the child.

6. Record-keeping

6.1 All concerns, discussions and decision made will be recorded in writing and kept confidential and stored securely. Records will be clear, comprehensive, actioned and outcome noted. All safeguarding records must include:

- A clear, comprehensive summary of the concern in the child's own words.
- Details of how the concern was followed up and resolved.
- A note of any action taken, decisions reached and the outcome.
- The rationale for decisions, including reasons for referring (or not) to external agencies.

6.2 A written record of all safeguarding and/or child protection concerns, discussions and decisions made will be kept in individual children's files. This will be separate from the main school file and will only be accessed by the relevant safeguarding staff.

6.3 Kingsbury Academy keeps all safeguarding files electronically, using a system called Child Protection Online Management System (CPOMS).

6.4 Staff will submit all concerns in writing to the DSL at the earliest opportunity. This may be after having a verbal conversation, but conversations will also be followed up in writing.

6.5 In the event that a child moves school, the safeguarding file will be transferred to the new setting securely and separately from the main school file in a timely manner (within 5 days for in-year transfers). Once received by the new school, this school will not retain the information.

6.6 The school will seek to hold at least two emergency contacts for every child.

6.7 All data processed by Kingsbury Academy is done so in line with the General Data Protection Guidelines and the Data Protection Act (2018) and Information Sharing (2024). DPA and UK GDPR do not prevent the sharing of information for the purposes of keeping children safe and promoting their welfare. Please see the following policies for additional information; [Data Protection Policy](#).

6.8 Further information regarding information sharing and data processing in relation to safeguarding can be found in Part One of Keeping Children Safe in Education (September 2025).

7. Photography and Images

7.1 Consent from parents to photograph children at school events for promotional reasons will be sought when the child joins Kingsbury Academy. Parents will be invited to regularly update information throughout the academic year.

7.2 Parents can withdraw consent at any time and must notify Kingsbury Academy via the school office if they do not wish their child's photographs to be used.

7.3 Photographs of children used publicly will not be displayed with their name or other identifiable personal information.

7.4 Photographs of children will be processed in line with the General Data Protection Regulation.

[Data Protection Policy](#)

[Privacy Notice: Pupils and Parents](#)

8. Early Help Assessment

8.1 Kingsbury Academy is committed to supporting families as soon as a possible problem arises. It is more effective to support a family through early help than reacting to a problem later. Everyone who comes into contact with children and their families and carers have a role to play in safeguarding children. Kingsbury Academy is committed to working closely with its neighbouring family hub to work with families in the community to improve outcomes for children.

Pathways Family Hub Coventry, Lawrance Saunders Road, CV6 1HD, Telephone: 02476 788 444) PathwaysFamilyHub@coventry.gov.uk

8.2 Any child may benefit from early help, but as guided by KCSIE (2025) all school staff will be particularly alert to the potential need for early help for a child who:

- is disabled or has certain health conditions and has specific additional needs
- has special educational needs (whether or not they have a statutory Education, Health and Care plan)
- has a mental health need
- is a young carer
- is showing signs of being drawn in to anti-social or criminal behaviour, including gang involvement and association with organised crime groups or county lines
- is frequently missing/goes missing from education, home or care
- has experienced multiple suspensions, is at risk of being permanently excluded from schools, colleges and in Alternative Provision or a Pupil Referral Unit.
- is at risk of modern slavery, trafficking, sexual and/or criminal exploitation
- is at risk of being radicalised or exploited
- has a parent or carer in custody, or is affected by parental offending
- is in a family circumstance presenting challenges for the child, such as drug and alcohol misuse, adult mental health issues and domestic abuse

8.3 Kingsbury Academy works within the Coventry Safeguarding Children Partnership's framework, [effective-support-for-children-and-young-people](#) available on the CSCP website.

9. Staff training

9.1 In order for staff to be able to understand and discharge their safeguarding and child protection duties, Kingsbury Academy has committed to training staff throughout the academic year. All staff members will be made aware of the Kingsbury Academy's safeguarding processes and structures and will receive training on these as part of their induction. As part of this training and their annual refresher, they will also receive;

- This 'Safeguarding and Child Protection Policy';
- The staff Code of Conduct
- Copies of Part 1 and/or Annex A of Keeping Children Safe in Education (September 2025)
- School procedures for Children Absent from Education
- The school Behaviour Policy and Positive Behaviour Support training
- Health Awareness Training

9.2 Staff at Kingsbury Academy will undertake the following training (where appropriate) during the year.

- Online Safety
- Prevent Training
- Administering Medicine
- Governor Training
- Fire Safety Training
- Local Authority Training
- DSL Briefings and e-bulletin
- SCR
- Safer recruitment
- Manual Handling
- First Aid
- EVC
- Mental Health awareness training

9.3 Kingsbury Academy recognise that children may engage in risky behaviours that may put them at additional risk of danger. These can include drug taking, alcohol abuse, truanting and the sharing of consensual or non-consensual nude images or videos. Staff will also be trained in these areas in order to be able to further recognise if a child is at risk of harm.

9.4 All staff are aware that children may not feel ready or know how to tell someone that they are being abused, exploited, or neglected, and/or they may not recognise their experiences as harmful. For example, children may feel embarrassed, humiliated, or being threatened. This could be due to their vulnerability, disability and/or sexual orientation or language barriers. This should not prevent staff from having a professional curiosity and speaking to the DSL if they have concerns about a child. It is also important that staff determine how best to build trusted relationships with children and young people which facilitate communication.

10. Safer Recruitment

10.1 Kingsbury Academy is committed to providing children with a safe environment, in which they can learn. We take safer recruitment seriously and all staff are subject to the following checks;

- Identity check;
- DBS clearance;
- Prohibition from teaching checks (where required);
- Barred List check;
- Section 128 checks (as required - leadership and management);
- Reference check (two references required);
- Professional qualifications check;
- Right to work in the UK check;
- Further checks for those who have lived outside the UK;
- Disqualification Under the Childcare Act 2006 checks (as required);
- Online public searches e.g. social media checks and
- Verification of the candidate's mental and physical fitness may also be sought.

10.2 A record of all checks completed for members of staff will be recorded on the Single Central Record.

10.3 All new members of staff will be required to obtain DBS clearance. Kingsbury Academy reserves the right to re-check DBS clearance for any member of staff where information is received that indicates they may pose a risk to children and may request candidates to register on the DBS update service.

10.4 At least one member of every interview panel will have undertaken Safer Recruitment training which it is recommended is refreshed every 2 years.

10.5 We take proportionate decisions on whether to check individuals above and beyond what is legally required dependant on individual circumstance.

10.6 Any visitor to the school who has not been subject to the necessary checks will be supervised at all times and a risk assessment completed.

10.7 All safer recruitment practices at Kingsbury Academy comply with Keeping Children Safe in Education (September 2025). See Part 3 of Keeping Children Safe in Education (September 2025) for further information.

11. Allegations of abuse against staff

11.1 Kingsbury Academy takes all safeguarding matters including low level concerns and/or allegations that harm to a child has occurred against staff (including agency, volunteers and contractors) seriously and will manage them in line with this policy, Part Four of Keeping Children Safe in Education (September 2025) and the CSCP Guidance, ['Allegations Against Staff and Volunteers'](#).

11.2 Allegations or concerns may include

- Staff having behaved in a way that has harmed a child, or may have harmed a child;
- Staff possibly committing a criminal offence against or related to a child;
- Staff behaving towards a child or children in a way that indicates that he or she may pose a risk of harm to children; or
- Staff behaving or possibly behaving in a way that indicates they may not be suitable to work with children (including behaviour outside of work). This is known as 'Transferable risk'.

11.3 If a concern or allegation of abuse arises against the Headteacher or should there be a conflict of interest to the Headteacher, it must be immediately reported to the Trust CEO Richard Chapman.

11.4 If a concern or allegation of abuse arises against any member of staff, supply teacher, volunteer or contractor other than the Headteacher, it must be reported to the Headteacher without delay. Concerns should be reported in writing using the Kingsbury Academy Safeguarding Concern Form.

11.5 Concerns or allegations of abuse against staff must be reported to the Headteacher or Trust CEO as appropriate and not discussed directly with the person involved.

11.6 The Headteacher or Trust CEO should consider if the concern or allegation meets the harms threshold as outlined in Working Together to Safeguard Children (2023) guidance indicating that a person in a Position of Trust has:

- behaved in a way that has harmed a child, or may have harmed a child
- possibly committed a criminal offence against or related to a child
- behaved towards a child or children in a way that indicates they may pose a risk of harm to children
- behaved or may have behaved in a way that indicates they may not be suitable to work with children

11.7 If they feel the criteria is met then they should refer into Coventry LADO using the online referral form on:

https://myaccount.coventry.gov.uk/service/Allegations_against_people_who_work_in_positions_of_trust_with_children_referral

The Headteacher or Trust CEO can also seek guidance/advice if unsure by emailing lado@coventry.gov.uk

11.8 'Low-level' concern does not mean it is not significant. This is a term used for any concern (no matter how small) that an adult working with a child may have breached the staff Code of Conduct and does not meet the harm threshold. Examples of which may include:

- Being overly friendly with children
- Having favourites
- Taking photographs of children on their mobile phone
- Engaging with a child on a one-to-one basis in a secluded area or behind a closed door. Or;

- Humiliating pupils.

The details of the LADO can be found at the front of this policy.

11.9 Concerns relating to a position of trust issue will be referred to the Local Authority designated officer within 24 hours. In accordance with *Keeping Children Safe in Education 2025*, the school will make every effort to maintain confidentiality and guard against unwanted publicity while an allegation is being investigated or considered.

11.10 If a child has suffered or may have suffered abuse or harm, a MASH referral will also be made.

11.11 In the instances where an allegation is dealt with internally, the Local Authority designated officer will provide information and support Kingsbury Academy in managing the allegation.

11.12 A referral to the Disclosure and Barring Service will be made if a member of staff is dismissed or removed from their post as a result of safeguarding concerns, irrespective of whether they have resigned.

11.13 Supply Teachers and all contracted staff

11.13.1 Although the school does not directly employ supply teachers and contractors, the school will ensure that any concerns or allegations are referred to LADO and the relevant agency informed as the employer.

11.13.2 The school will never cease to use a supply teacher for safeguarding reasons without liaising with the Local Authority Designated Officer and reaching an agreed outcome.

11.13.3 Governing bodies/proprietors will liaise with the supply agency to determine whether to suspend or redeploy the supply teacher whilst they carry out their investigation.

11.13.4 The school will inform supply agencies of its process for managing allegations, including inviting the agency's human resource manager (or equivalent) to meetings and regularly updating agencies on relevant school policies. The school will usually take the lead because agencies do not have direct contact with children or staff, so will not be able to gather information.

11.14. Governors

11.14.1 If an allegation or concern is about a Governor, the school/college will follow local procedures.

11.15. Volunteers

11.15.1 Risk assessments and a DBS check will be requested for all volunteers. Under no circumstances will a volunteer prior to satisfactory checks being completed be alone with children unsupervised or allowed to work in regulated activity.

11.16. Whistleblowing

11.16.1 Kingsbury Academy operates a culture of safeguarding, and all staff should report any concerns about poor or unsafe practice, or Kingsbury Academy's safeguarding processes to the senior leadership team.

11.16.2 Appropriate whistleblowing procedures are in place whereby the senior leadership team will take all concerns seriously.

11.16.3 In the event that a member of staff is unable to raise an issue with senior leadership in school, they should refer to Part 1 of Keeping Children Safe in Education for additional guidance on whistleblowing procedures.

11.17. Complaints Procedure

11.17.1 The School operates a complaint procedure which will be followed where a pupil or parent raises a concern about poor practice towards a pupil that initially does not reach the threshold for child protection action. Poor practice examples include unfairly singling out a pupil or attempting to humiliate them, bullying or belittling a pupil or discriminating against them in some way. Complaints are managed by the headteacher, other members of the senior leadership team and governors. [Complaints Policy](#)

11.17.2 Complaints from staff are dealt with under the school's complaints and disciplinary and grievance procedures. (Also refer to Low level concerns)

11.17.3 Complaints which escalate into a child protection concern will automatically be managed under the school's child protection procedures.

12. Promoting safeguarding and welfare in the curriculum

12.1 Kingsbury Academy recognises the importance of teaching children how to stay safe and look after their mental health and are committed to equipping children with the skills and knowledge to have successful and happy lives.

12.2 The school will teach children about safeguarding, including online safety, keeping themselves safe through the use of the NSPCC PANTS campaign and pupils have access to a specific safeguarding Aided Language Display (ALD) to support communication. Through the PSHE/RHE curriculum topics such as bullying, Public and Private and relationships are covered.

12.3 Schools play a crucial role in preventative education. Preventative education is most effective in the context of a whole-school approach that prepares pupils and students for life in modern Britain and creates a culture of zero tolerance for sexism, misogyny/misandry, homophobia, biphobic and sexual violence/harassment. The school will have a clear set of values and standards, upheld and demonstrated throughout all aspects of school life. These will be underpinned by the school behaviour policy and pastoral support system, as well as by a planned programme of evidence based RHE delivered in regularly timetabled lessons and reinforced throughout the whole curriculum (PSHE/RHE/ Healthy Living).

12.4 Pupils at Kingsbury Academy will receive the following as part of our promotion of safeguarding across the curriculum:

- PSHE (RHE) and Healthy Living Curriculum (Including Online Safely)
- NSPCC Speak Out Stay Safe
- Positive Behaviour Support Approach
- Parental Workshops (Communication/Behaviour/Sensory Integration)
- Curriculum drop down days e.g. Diversity Day

- Access to safeguarding specific ALD boards and Talking Mats to support disclosures.

12.5 Education at home and remote education

Kingsbury Academy continues to operate under this policy and KCSIE/WTSC when children are learning at home or at school. This policy should be read in conjunction with the following policies

- Online safety
- Home learning Policy

13. Children Looked After

13.1 The most common reason for children to be looked-after is because they have experienced abuse and/or neglect. Kingsbury Academy recognises that children looked after may have additional vulnerabilities by virtue of this. The Designated Lead for Looked-After and Previously Looked-After Children is Christina McLaughlin (Assistant Headteacher)

13.2 Staff will receive training on how to best safeguard children who are Looked-After and who have been Previously Looked-After.

13.3 The school will work with Personal Advisors when children leave care (where applicable).

13.4 Kingsbury Academy is committed to working with other agencies to ensure the best outcomes for Looked-After and Previously Looked-After children.

14. Children with Special Educational Needs and Disabilities (SEND) or physical health needs

14.1 As outlined in Keeping Children Safe in Education (2025), Kingsbury Academy is aware that children with additional needs or disabilities may be more vulnerable to abuse both online and offline and additional barriers may exist when recognising abuse and neglect. This could be because;

- assumptions that indicators of possible abuse such as behaviour, mood and injury relate to the child's disability without further exploration;
- being more prone to peer group isolation or bullying (including prejudice-based bullying) than other children;
- the potential for children with SEN and disabilities or certain medical conditions being disproportionately impacted by behaviours such as bullying, without outwardly showing any signs; and
- communication barriers and difficulties in overcoming these barriers.
- Being unable to understand the difference between fact and fiction in online content

14.2 Any reports of abuse involving children with SEND will therefore require close liaison with the designated safeguarding lead and SENCO. Staff will also be trained in recognising signs of abuse in children with SEN and disabilities or certain medical conditions.

14.3 Staff will take into account the needs of a child when responding to concerns of abuse or when taking a disclosure. We recognise that some children require specialist intervention to communicate and advice from the SENCO will be sought in these circumstances.

14.4 Safeguarding learning opportunities within the curriculum will be appropriately differentiated to ensure all children can access it.

15. Use of reasonable force

15.1 There may be occasions when staff are required to use reasonable force to safeguard children. We will not use any more force than is proportionate and necessary, and only utilised as the final gradient of support. This follows the principles of Positive Behaviour Support/Management. All strategies utilised to de-escalate situations e.g., distraction, positive reinforcement (token economy), reduced demand, strategic capitulation are recorded within the incident summary on the behaviour recording system Arbor. There may be occasions when staff are required to use physical intervention to safeguard children. We will not use any more force than is necessary to ensure safety for the individual, other pupils, staff members or members of the Public.

15.2. Good practice dictates that any reactive strategy should be tailored to meet the needs of the individual pupil and used as a gradient of support as the last resort. The agreed use of any reactive strategy should be clearly identified and recorded in the pupils Positive Behaviour Support Plan. This will be completed in collaboration with staff supporting the pupils, parents, and other professionals as appropriate. If restrictive physical intervention is needed in a crisis situation, then the Positive Behaviour Support Plan must be created/reviewed, and this written into the plan. The Positive Behaviour Support Plan should be reviewed after any physical intervention with a plan to reduce the need for this. Kingsbury Academy train staff in effective recording methods and conduct checks to ensure the reliability and validity of ongoing records. Staff must respond swiftly to any escalating patterns of use, identifying root causes and taking appropriate corrective actions.

15.3. Reactive strategies (Physical intervention) strategies must;

- Not be used in isolation but always used in conjunction with positive behavioural procedures
- Follow a gradient of support, with the least intrusive procedure always being the first option
- They must only be used as a last resort when all other strategies have proved unsuccessful
- They must only be used for the minimum amount of time necessary to deal with the immediate situation
- Not be used as punishment/rewards
- Be tailored to meet the individual need prescribed on an individual basis only
- Use the minimal amount of force necessary in any given situation
- Be proportionate to the immediate situation
- Focus on giving control back to the pupil as quickly as possible
- Avoid the use of pain compliance
- Not employ potentially dangerous positions that may compromise the health and wellbeing of the pupil
- Avoid vulnerable parts of the body (e.g. neck, chest, groin)
- Avoid hyper extension and/or hyper flexion of the joint

- Not impede the process of breathing
- Be capable of being performed by all key staff
- Be regularly reviewed
- Take into consideration all possible contra-indications and/or complications
- Pupils routinely assessed following their use for any signs of injury or psychological distress
- Recorded on Arbor and CPOMS within 24 hours following their use If you have any cause for concern following restrictive practice with a pupil, please contact the Designated Safeguarding Lead.

16. Alternative Provision

16.1 Kingsbury Academy will continue to be responsible for the safeguarding of pupils placed with an alternative provision provider (if required) and will be satisfied that this provider meets the needs of the pupil. We will obtain the address of any provider that we use, including any subcontracted provision or satellite sites. We will review the suitability of the provision at least half-termly. If any safeguarding concerns arise with the provision, we will review and consider termination, where they are not satisfactorily addressed. Written confirmation from the provider that appropriate safeguarding checks have been carried out will be sought on individuals working at the establishment, i.e. those checks that the school would otherwise perform in respect of its own staff.

16.2 The DSL will continue to have oversight of all pupils accessing any part of their learning from an alternative provider or delivery online or offsite provided by any organisation or individual not employed by the school. The DSL will ensure that robust arrangements are in place for timely and effective information sharing of safeguarding information between the school and alternative/external providers.

16.3 The DSL will also take responsibility for ensuring that robust procedures are in place to confirm attendance and to enable the swift reporting of non-attendance and children going missing from alternative/ external providers at any time when they should be with that provider.

17. Use of school premises for non-school activities

If Kingsbury Academy decides to hire or rent out school facilities/premises to organisations or individuals. Safeguarding is still considered with this and the school will seek assurance that the provider has appropriate safeguarding and child protection policies and procedures in place including liaising directly with the school on these matters were appropriate. This applies whether the children in attendance are on the school's roll or not. The governing body/proprietor will ensure safeguarding requirements are included in any transfer of control agreement and that failure to comply with this would result in termination of the agreement. [Keeping children safe in out-of-school settings](#) offers guidance on this. In the event of an incident, the school will follow its own policy including informing the LADO.

18. Summary

17.1 The school is committed to safeguarding children and will always make safeguarding decisions that are in the best interests of each child. For further information or if you have any queries about this policy, please contact the school.

19. Changes

Description	Date	Page	Section
Updated policy following publication of Keeping Children Safe in Education 2022	September 22	Whole document	Whole document
Updated roles: Headteacher- Amjid Zaman, DSL – Clair Nutt, DDSL – Susannah Roberts, Kathryn Croom and Amjid Zaman	February 23	Whole document	Whole document
Updated policy following publication of Keeping Children Safe in Education 2023	September 23	Whole document	Whole document
Working Together to Safeguard Children updated from (2018), new date (2023). New DDSL added; Christina McLaughlin Safeguarding	March 24	Whole document	Whole document

Governor – Sean Byrne removed, and Najma Aziz added.			
Updated policy following publication of Keeping Children Safe in Education 2024. DDSL Susannah Roberts removed. Links updated to reflect current policies/documents.	September 24	Whole document	Whole document
Updated policy following publication of Keeping Children Safe in Education 2025. DDSL Aroosa Parveen added. Link Governor Updated; Carol Head. Links updated/removed to reflect current policies and documents.	September 25	Whole document	Whole document

Appendix A: This policy should be read in conjunction with the following policies

Kingsbury Academt adheres to Coventry Safeguarding Children Partnership Policies, which can be found here;

- [Allegations Against Members of Staff](#)
- [Allegations Against Staff or Volunteers \(CSCP\)](#)
- Managing Professional Disagreements (CSCP)

- Behaviour Policy
- Code of Conduct
- Attendance Policy
- Anti-Bullying Policy
- Whistleblowing Policy
- Prevent
- Acceptable use Policy
- RHE Policy
- Managing Medical Conditions
- Safer Recruitment Policy
- Mental Health and Wellbeing Policy
- Sexual Harassment Policy
- Health and Safety Policy
- Intimate Care Policy
- SEND Policy

Appendix B: Further Safeguarding Information

Types of Abuse

Kingsbury Academy will take action if we believe a child is at risk of or is suffering from abuse. Abuse is not limited to physical, emotional, sexual abuse and neglect. For further information on the definitions of the types of abuse below, please refer to Keeping Children Safe in Education (2025), Annex A.

See below for policy information relating to other key safeguarding issues. All decisions taken in responding to concerns of abuse will be taken in the best interests of the child.

Bullying, including cyber- or online-bullying

Kingsbury Academy takes all forms of bullying seriously and will respond sensitively and quickly to any reported bullying. Any disclosure/report of bullying we will work to resolve it. Where appropriate we teach children about the dangers of bullying through our curriculum. Bullying can take many forms, and we have several policies that cover different aspects of bullying. Please see links provided in Appendix A.

Child criminal exploitation (including involvement in county lines)

At Kingsbury Academy we recognise that children and young people can be vulnerable to exploitation by criminal groups, including through Child Criminal Exploitation (CCE) and County Lines activity (it involves children and young people being manipulated, coerced, or forced into criminal activity, often for the benefit of others. County Lines is a form of CCE involving the transport of drugs, weapons, or money across counties by children, often using intimidation, violence, or debt bondage). We understand that children involved in criminal exploitation are victims, not perpetrators. We aim to identify early warning signs of exploitation and intervene as early as possible.

All staff receive regular training to recognise signs of CCE and County Lines involvement, including changes in behaviour, unexplained absences, possession of unfamiliar items, and sudden changes in friendship groups.

Any concerns relating to CCE must be reported immediately to the Designated Safeguarding Lead (DSL), who will follow the school's safeguarding procedures in line with local authority and statutory guidance. We work in partnership with police, children's social care, and other agencies to safeguard affected pupils and provide appropriate interventions. Pupils at risk or affected by CCE will receive targeted support, which may include referrals to specialist services, mentoring, and family support.

Domestic abuse

At Kingsbury Academy we recognise that domestic abuse can have a significant and long-lasting impact on children's emotional, physical, and psychological wellbeing, whether they are direct victims or witnesses to abuse. We adopt a trauma-informed approach to safeguarding, recognising that children living in homes where there is domestic abuse are at increased risk of harm. We treat all disclosures of domestic abuse seriously and respond swiftly and sensitively. We work closely with families and multi-agency partners to protect and support children affected by domestic abuse.

Children who live in a home where domestic abuse occurs are recognised as victims in their own right under the Domestic Abuse Act 2021.

Kingsbury Academy is part of Operation Encompass, a national initiative that ensures that schools are informed promptly when police have attended a domestic abuse incident where a child was present or normally resides. The Designated Safeguarding Lead (DSL) or Deputy Designated Safeguarding Lead (DDSL) will receive the information (this notification will be recorded on cpoms) and ensure that the child is supported appropriately. Information shared via Operation Encompass is handled in line with our data protection and safeguarding policies. This early notification enables us to provide immediate support and safeguard children during a potentially vulnerable time. We recognise that receiving this information helps us understand a child's behaviour, emotional needs, and any changes in wellbeing or academic performance, and allows us to provide timely support or intervention.

Fabricated or induced illness

Kingsbury Academy treats all concerns relating to possible fabricated or induced illness with seriousness and sensitivity. We understand that FII can result in significant harm, including unnecessary medical treatment, emotional trauma, and missed education. We aim to identify early warning signs through consistent monitoring, staff awareness, and appropriate information sharing. Staff are trained to be alert to indicators such as frequent or unexplained absences due to illness, discrepancies between reported and observed symptoms, or excessive medical involvement without diagnosis. All concerns are carefully documented on cpoms and monitored over time for patterns or inconsistencies. If Fabricated or induced illness is suspected, the Designated Safeguarding Leads will seek guidance from relevant health professionals and refer to Children's Social Care in line with the school's safeguarding procedures.

Faith-based abuse

At Kingsbury Academy we are committed to safeguarding all pupils from harm, regardless of background, culture, or belief. We recognise that faith-based abuse, sometimes referred to as ritual, spiritual, or belief-based abuse, is a serious form of child abuse that can cause long-term physical and emotional harm. We have a zero-tolerance approach to all forms of abuse, including those which may be disguised as acts of faith or belief. We are aware that abuse can sometimes be linked to religious or cultural practices and may be hidden or justified under the guise of tradition, punishment, or spiritual healing. All concerns will be taken seriously, sensitively handled, and reported in accordance with our safeguarding procedures.

Any concerns relating to faith-based abuse are to be reported immediately to the Designated Safeguarding Lead (DSL). All cases will be treated with the utmost care and sensitivity. We will work closely with Children's Social Care, the police, and specialist cultural or faith-based organisations where appropriate to ensure the child's safety and welfare. While we respect and celebrate cultural diversity, the protection of the child always takes precedence over cultural or religious explanations for abusive behaviour.

Female genital mutilation (A form of so-called 'honour-based' abuse)

At Kingsbury Academy we recognise that Female Genital Mutilation (FGM) is a serious form of child abuse and violence against girls and young women. It is illegal in the UK and has severe physical and emotional consequences for the victim. We will take prompt, proportionate, and protective action if we suspect that a pupil is at risk of FGM or has already undergone the procedure. Under Section 5B of the FGM Act 2003, as amended by the Serious Crime Act 2015, teachers and other professionals have a mandatory duty to report known cases of FGM involving girls under 18 to the police.

This duty applies when a professional is informed by the girl that FGM has been carried out or observes physical signs that appear to show that FGM has been carried out. Suspected cases or risk of FGM must be reported immediately to the Designated Safeguarding Lead (DSL), who will follow child protection procedures. We work closely with social care, health professionals, and the police to protect and support pupils at risk of or affected by FGM.

Forced marriage (A form of so-called 'honour-based abuse)

At Kingsbury Academy we are committed to safeguarding all pupils and protecting them from all forms of abuse, including Honour-Based Abuse (HBA) and Forced Marriage. These are serious safeguarding concerns and violations of children's human rights. We recognise that these abuses often stem from cultural or familial expectations, but we will always prioritise the welfare, rights, and safety of the child. Note: Forced marriage is not the same as an arranged marriage. In a forced marriage, consent is absent or obtained under duress.

Any concerns about HBA or forced marriage must be reported immediately to the Designated Safeguarding Lead (DSL). The DSL will follow child protection procedures and seek advice from Children's Social Care as necessary. If a child is at immediate risk (e.g. risk of being taken abroad), Kingsbury Academy will act urgently and the DSL/DDSL will contact the police. We will never attempt to mediate between the pupil and their family or community, as this could place the pupil at further risk. We ensure access to appropriate emotional and practical support for any pupil affected by honour-based abuse or the threat of forced marriage.

Gangs or youth violence

At Kingsbury Academy we recognise that children and young people can be vulnerable to recruitment by gangs and may be drawn into violent or criminal activity, often through coercion, manipulation, or peer pressure. We do not tolerate any form of violence, intimidation, or gang-related activity in or around school. We view involvement in gangs or youth violence as a safeguarding concern, and pupils affected are treated as victims in need of support, not criminals. Any concerns are reported immediately to the Designated Safeguarding Lead (DSL), who will take appropriate action in line with child protection procedures and record on cpoms. We work closely with local safeguarding partners, youth justice services, police, and

community outreach organisations to support pupils and manage risks. Pupils identified as being at risk of involvement in gangs or violence may receive tailored interventions.

Gender-based violence

At Kingsbury Academy, we are committed to promoting equality, respect, and safety for all pupils. We recognise that Gender-Based Violence (GBV) is a serious safeguarding concern and can have a profound and lasting impact on children and young people, regardless of gender. We take a zero-tolerance approach to any form of violence, abuse, or harassment that is rooted in gender inequality, gender stereotypes, or power imbalances.

Pupils are encouraged to report any form of abuse or violence. We foster a culture of listening and believe all disclosures will be taken seriously and acted upon. Any pupil affected by GBV will be offered appropriate support, including access to pastoral care, or referral to external specialist services. The Designated Safeguarding Lead (DSL) will follow child protection procedures and liaise with children's social care, police, or health services as needed. We actively challenge sexism, misogyny, and gender-based discrimination in all forms, both in person and online. Respect and equality are embedded in our school ethos and curriculum.

Hate

At Kingsbury Academy, we believe that every child has the right to learn and thrive in an environment that is safe, respectful, and inclusive. We will not tolerate any form of prejudice, discrimination, or hate in our school community. We treat all reports of prejudice-related harm seriously and act to protect the safety, dignity, and wellbeing of those affected. We recognise that hate crime can overlap with bullying, child-on-child abuse, online abuse, and harassment, and we respond accordingly. All hate-related incidents and crimes are reported to the Designated Safeguarding Leads (DSL/DDSL's), who records and responds in line with school safeguarding and behaviour policies.

Victims of hate crime will be offered appropriate support, including, restorative work, and referrals to external agencies if needed. We will also take action to educate and challenge those responsible. Where appropriate, we will report hate crimes to the police, and work in partnership with local Prevent teams, community safety officers, or equality and inclusion services.

Homelessness

At Kingsbury Academy we recognise that homelessness or the risk of becoming homeless can have a serious impact on a child's safety, wellbeing, and educational outcomes. Children who are homeless or living in insecure housing may be particularly vulnerable to abuse, neglect, exploitation, and educational disadvantage. We are committed to identifying, supporting, and safeguarding any pupil affected by homelessness or housing insecurity. We ensure that no pupil is discriminated against, stigmatised, or penalised due to their housing situation. We work in partnership with

pupils, families, and external agencies to provide the best possible support and intervention. Concerns are reported to the Designated Safeguarding Leads (DSL/DDSL), who may: Liaise with local Housing Services or Early Help teams, refer to Children's Social Care if the child is at risk, work with the Virtual School Head if the pupil is looked-after or previously looked-after. We work with a range of agencies, including, Local Authority Housing Teams, Children's Services, Youth Homelessness Charities and Outreach Services and Educational Welfare Officers.

Radicalisation and Extremism

At Kingsbury Academy, we are fully committed to safeguarding our pupils from the risks of radicalisation and extremism. We recognise that pupils can be exposed to extremist influences or prejudiced views, through external sources, online activity, or peer relationships and that this can pose a significant threat to their safety and wellbeing.

As part of the Prevent Duty under the Counterterrorism and Security Act 2015, schools have a legal responsibility to identify pupils who may be vulnerable to radicalisation, build pupils' resilience to extremist narratives, work in partnership with local safeguarding and Prevent teams and make referrals to Channel, a multi-agency programme offering support to individuals at risk

All staff receive Prevent awareness training and know how to identify signs of radicalisation and extremism. This includes noticing changes in behaviour, language, isolation, or online activity. Any concerns about radicalisation are reported immediately to the Designated Safeguarding Lead's (DSL/DDSL). If necessary, the DSL will make a referral to the Local Authority Prevent team or Channel panel.

Any pupil identified as being at risk of radicalisation will receive appropriate support, which may include, pastoral care, engagement with families and/or intervention through external agencies such as Channel or Prevent teams, we will work sensitively with pupils and families, balancing support with proportionate safeguarding action where necessary.

Relationship abuse

Kingsbury Academy recognises that abuse can occur in pupils relationships as well as adult ones, and that both girls and boys can be victims or perpetrators. Relationship abuse may occur face-to-face or via digital platforms such as social media, texts, or messaging apps. We believe all pupils/staff and families have the right to healthy, respectful, and safe relationships, free from coercion, control, or harm. We take all disclosures of relationship abuse seriously and respond promptly, sensitively, and proportionately. We consider relationship abuse between pupils to be a form of child-on-child abuse and treat it as a safeguarding concern. We recognise that children may struggle to identify abusive behaviours in relationships, which is why prevention and education are key. Pupils are encouraged to communicate to a trusted adult if they are worried. All concerns are reported to the Designated Safeguarding Leads (DSL/DDSL's). Where appropriate, we work with external services such as Children's Social Care, early help, police, and specialist domestic abuse services. We also acknowledge the role of technology in relationship abuse, including, sexting or pressure

to share explicit content, monitoring or harassment via social media, controlling digital passwords and accounts. We address these risks in our online safety curriculum and school acceptable use policies.

Serious Violence

At Kingsbury Academy we understand that serious violence poses a significant risk to pupils' safety, development, and life chances. We acknowledge that pupils may be affected by serious violence both directly and indirectly, including through gang involvement, knife crime, criminal exploitation, or witnessing violent incidents in their communities. We have a zero-tolerance approach to violence in any form.

All staff are trained to identify risk factors and warning signs of serious violence, including: truancy, unexplained absences, or disengagement from school, changes in behaviour or peer groups, possession of weapons or signs of injury, unexplained money, phones, or gifts and/or involvement with older peers or known gang members. All concerns about serious violence are reported to the Designated Safeguarding Leads (DSL/DDSL), who will take action in line with child protection procedures.

Local Context and Serious Violence Duty

In line with the Serious Violence Duty (2023), we contribute to the wider local safeguarding strategy for reducing serious violence, working in partnership with local authorities, police, and health agencies.

Sexual violence or sexual harassment (including child-on-child abuse)

At Kingsbury Academy we have a zero-tolerance approach to all forms of sexual violence, sexual harassment, and sexually harmful behaviour, recognising that these are serious safeguarding issues. We understand that such behaviours can happen anywhere, and may occur between any gender. Sexual violence and harassment are never acceptable and will not be tolerated or passed off as "banter", "just having a laugh", or "part of growing up". All incidents will be taken seriously and responded to appropriately to protect the victim and educate the perpetrator. We aim to create a culture where disclosures are taken seriously, victims are supported, and everyone understands boundaries and respectful behaviour.

All concerns are reported to the Designated Safeguarding Lead's (DSL/DDSL). Victims will be listened to, supported with compassion, and kept safe. We will never make a victim feel they are creating a problem or that they are to blame. Where appropriate, support will also be given to the alleged perpetrator, recognising that harmful behaviour can stem from their own experiences or vulnerabilities.

We are alert to the ways in which technology can be used to perpetrate or facilitate sexual harassment and abuse. We monitor school networks, educate pupils about digital safety, and respond swiftly to incidents involving, sharing explicit images, sexualised bullying or threats and online grooming or exploitation.

Sharing of consensual or non-consensual nude images and videos

At Kingsbury Academy, we recognise that the sharing of explicit or indecent images whether consensual or non-consensual is a safeguarding concern. We are committed to educating our pupils about the risks, supporting those affected, and responding in line with statutory guidance.

We treat all incidents of image sharing as serious safeguarding concerns. We distinguish between developmentally inappropriate behaviour and intentional harm, responding accordingly. We take into account the age, maturity, intent, and impact on all pupils involved. We are committed to supporting victims, addressing harmful behaviour, and working with external agencies when necessary. All staff receive training to recognise and respond appropriately to concerns about image sharing, including when and how to escalate. Any concerns must be reported to the Designated Safeguarding Lead's (DSL/DDSL's). The DSL will assess the incident using national guidance (e.g., UKCIS: Sharing nudes and semi-nudes: advice for education settings) and decide on an appropriate response. We will not view or forward the image unless absolutely necessary for safeguarding or legal purposes and only ever in line with police guidance.

We may involve Children's Social Care, police, or external safeguarding partners, particularly when: the image involves coercion or exploitation, there is an adult involved, there is intent to harm or distribute further. Victims will be offered pastoral and emotional support and reassured that they are not to blame. Pupils who have shared images will be assessed for intent and vulnerability and supported through appropriate behaviour or safeguarding measures.

Trafficking and modern slavery

At Kingsbury Academy we are committed to safeguarding all pupils from harm, including the hidden and often misunderstood dangers of child trafficking and modern slavery. We recognise that these forms of exploitation can affect children in the UK, including those who may appear to live or attend school without any obvious signs of abuse. We treat trafficking and modern slavery as serious safeguarding and criminal concerns. All staff are alert to the indicators of exploitation and are trained to respond appropriately. We work in partnership with the Local Authority, police where there are concerns a child may be a victim of modern slavery.

Children absent from education, home or care

Kingsbury Academy will take action to protect; children absent from education and Children missing from home or care. At Kingsbury Academy we recognise that pupils who are absent from education or missing from home or care are at increased risk of harm, exploitation, or neglect. We are committed to working proactively with pupils, families, and external agencies to identify concerns early and ensure that every child is safe, accounted for, and receiving their right to an education.

Children Absent from Education (CaE)

We monitor attendance closely and investigate patterns of unauthorised absence or withdrawal from roll. We follow Kingsbury Academy Attendance Policy and comply with statutory guidance on Children Missing Education (CME).

Children Missing from Home or Care (CMH/C)

Any child reported missing will be treated as a safeguarding concern and managed in line with local missing persons protocols.

We record and monitor pupil attendance in accordance with our Attendance Policy. Absences are followed up promptly by staff, with concerns escalated to the Attendance Lead and Designated Safeguarding Leads (DSL/DDSL). Where issues affecting attendance or safety are identified, we provide early intervention and may involve pastoral support, the Early Help Support, or external agencies. In line with our CME procedures, pupils will not be removed from the school roll without confirmation of their new provision and without notifying the Local Authority CME Officer. We are aware of our duty to make referrals where there is concern a child is missing education or is at risk.

If a parent expresses an intention to withdraw their child for elective home education (EHE), we will arrange a meeting with the parent/carer and a member of the safeguarding or leadership team alongside the Local Authority Care Plan Coordinator. The Local Authority EHE Team will be notified and ensure there is no underlying safeguarding concern driving the decision. All conversations and decisions will be recorded. Additional support is offered for looked-after children, children with a social worker, or those with previous safeguarding concerns. The Virtual School Head is informed and involved where applicable.

We also support pupils returning after long absences with appropriate pastoral care, re-integration support.

Private Fostering

The school have a duty to refer any children who are living in a private fostering arrangement to the local authority.

We will do this through a MASH referral. It is important that parents/carers inform us if a child is going to be staying at an alternative address to that of their primary caregivers for more than 28 days.

Indicators of Abuse

*See below for possible indicators of abuse. (Taken from *What to do if you are worried a child is being abused*, 2015)*

- *Childrens who behaviour and/or appearance changes – they may become aggressive, challenging, withdrawn or clingy;*
- *May have difficulty sleeping or start wetting the bed;*
- *Children with ill-fitting and/or dirty clothing;*

- Children with consistently poor hygiene;
- Children who make strong efforts to avoid specific family members or friends without an obvious reason;
- Children who don't want to change clothes in front of others or participate in physical activities;
- Sudden lack of concentration/learning;
- Appear to be consistently tired/hungry;
- Children who talk about being left at home alone, with inappropriate carers or with strangers;
- Children who don't reach developmental milestones with no learning/medical diagnosis/reason;
- Children regularly absent/missing from education;
- Children reluctant to go home after school;
- Children with poor punctuality/attendance, or who are consistently late being collected;
- Parents who are dismissive and non-responsive to practitioners concerns;
- Parents who collect their children from school when drunk, or under the influence of drugs;
- Children who drink alcohol regularly from a young age;
- Children who are concerned for younger siblings without explaining why;
- Children who talk about running away;
- Children who shy away from being touched or flinch at sudden movements.

Kingsbury Academy recognises that the above list of indicators is not exhaustive, and staff will receive training on the indicators of abuse.

