

Attendance Policy

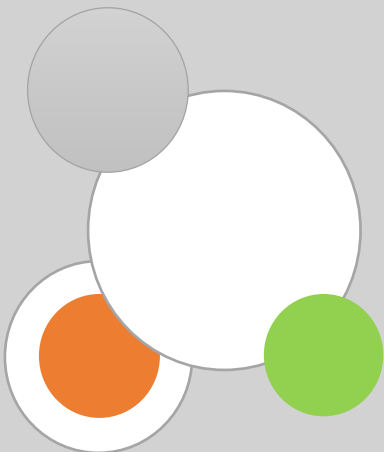
Date: **November 2023**

Ratified by the Academy Trust

Date: 30/11/23

To be reviewed (Every 2 years):

Date: November
2025



Policy Consultation and Review

This policy is available on our school website and is available on request from the school office. All parents are informed about the policy when their children join the school and on a regular basis through the newsletter and letters home where relevant.

We recognise the expertise our staff build by managing school attendance daily and we therefore invite staff to contribute to and shape this policy and associated attendance and safeguarding arrangements.

Contents

1. Introduction/Aim	3
2. Legal Framework	4
3. Attendance Objectives	5
4. Roles and Responsibilities	6
5. Recording Absence and Attendance	8
6. Our Procedures	10
7. Tailored Support	12
8. Persistent Absence and the use of legal interventions	13
9. Staged Reintegration/Reduced timetables	14
10. Related Policies	14
11. Statutory Framework	15
12. Appendices	15
13. Changes	15

1. Introduction/Aim

At Kingsbury Academy we value the attendance of all pupils. There is a strong relationship between good school attendance and achieving positive outcomes for children. It is recognised that attending school regularly can be a protective factor for children and young people. It is important that as a school we offer a safe environment, positive relationships, high quality teaching and learning opportunities to develop social and emotional skills.

Improving attendance and reducing absence, especially persistent and severe absence is a priority for our school and Coventry City Council. As set out in this policy, we will work with families to identify the reasons for poor attendance and try to resolve any difficulties at the earliest opportunity.

Our attendance policy aims to give clear guidance to staff, parents, pupils, and governors to:

- Support pupil's achievement by establishing the highest possible levels of attendance and punctuality.
- Recognise the key role of all staff in promoting good attendance.
- Provide a clear framework for monitoring and responding to pupil absences.
- Make parents/carers aware of their legal responsibilities and ensure their children have access to the education to which they are entitled.

We recognise that attendance is a matter for the whole school community. Our Attendance Policy should not be viewed in isolation; it is a strand that runs through all aspects of school improvement, supported by our policies on safeguarding, prevention of bullying, behaviour, and inclusive learning.

2. Legal Framework

Section 7 of the 1996 Education Act states that parents must ensure that children of compulsory school age receive efficient full-time education suitable to their age, aptitude, and any special educational need they may have. It is the legal responsibility of every parent to make sure their child receives that education either by attendance at school or by education otherwise than at school. A child is of compulsory school age at the beginning of the term following their 5th birthday. A child ceases to be of compulsory school age on the last Friday in June of the school year in which they reach the age of 16.

The government expects all schools and local authorities to:

- Promote good attendance and reduce absence, including persistent absence.
- Ensure every pupil has access to full-time education to which they are entitled.
- and act early to address patterns of absence.

Parents are expected to perform their legal duty by ensuring their children of compulsory school age who are registered at school attend regularly.

In accordance with the Education Act 1996, we will work with parents and carers and the Local Authority to ensure that parents are supported to secure education for children of compulsory school age. Where required, we will formalise support and where necessary, work with the LA to use legal measures.

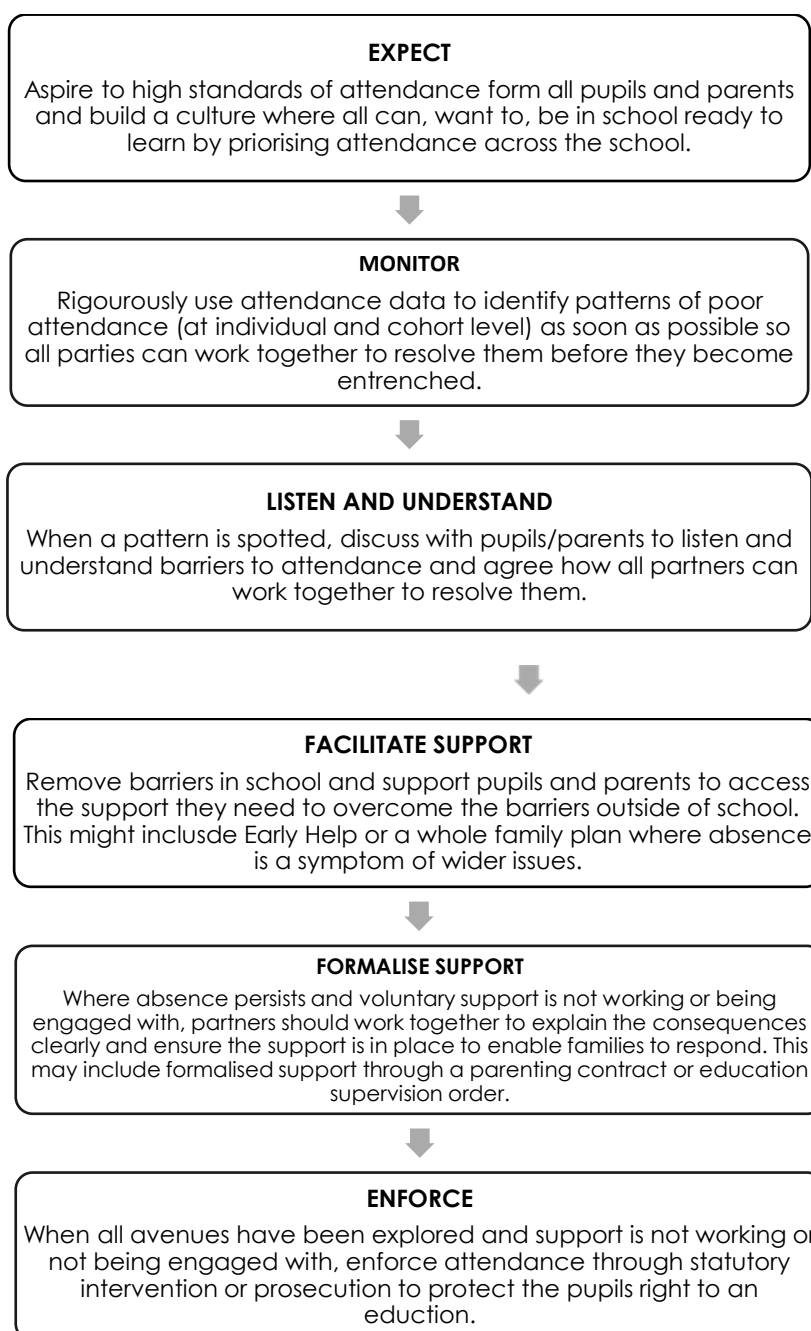
A "Parent" is defined as:

- Any natural parent, whether married or not
- Any parent who, although not a natural parent, has parental responsibility as defined in the Children Act (1989) for a child or young person
- Any person who, although not a natural parent, has care of a child or young person.

3. Attendance Objectives

Our school attendance policy:

- Is easy to understand by pupils (where applicable), parents and staff
- Is clear and consistently applied, transparent and fair
- Considers the individual needs of pupils and their families
- Is easy to find so that the whole school community is aware of our attendance expectations
- Includes the contact details of key staff to make it easy for parents to get in touch
- Is reviewed regularly
- Is followed in accordance with the procedures in the flowchart below:



4. Roles and Responsibilities

At Kingsbury Academy, we believe that school attendance matters to everyone. School attendance is a shared responsibility by governors, all school staff, parents, pupils, and the wider school community.

Role	Name	Contact details
Senior Attendance Lead	Clair Nutt	c.nutt@kingsbury.thrive.ac
Attendance Officer	Kathryn Croom	k.croom@kingsbury.thrive.ac
Named Governor for Attendance (Safeguarding Governor)	Sean Byrne	s.byrne@kingsbury.thrive.ac

The Local Governing Board of Kingsbury Academy recognises the importance of school attendance and promotes it across the school's ethos and policies. They take an active role in attendance improvement by:

- Supporting the school to prioritise attendance and work together with leaders to set whole school cultures.
- Ensuring school leaders fulfil expectations and statutory duties.
- Ensuring school staff receive training on school attendance.
- Regularly reviewing attendance data and help school leaders focus support on the pupils who need it.

Kingsbury Academy will:

- Have a clear school attendance policy on the school website which all staff, pupils and parents understand.
- Develop and maintain a whole school culture that promotes the benefits of good attendance.
- Accurately complete admission and attendance registers.
- Have robust daily processes to follow up absence.
- Have a dedicated senior leader with overall responsibility for championing and improving attendance.
- Proactively use data to identify pupils at risk of poor attendance.
- Work with each identified pupil and their parents to understand and address the reasons for absence, including any in-school barriers to attendance.

- Signpost and support access to any required services where out of school barriers are identified.
- Take an active part in the multi-agency effort with the local authority and other partners and where the lead practitioner is outside of the school, continue to work with the local authority and partners.
- Put additional targeted support in place to remove any barriers where absence becomes persistent.
- Hold more formal conversations with parents and be clear about the potential need for legal intervention in future where there is a lack of engagement.
- Work with the local authority on legal intervention where support is not working, being engaged with or appropriate.
- Intensify support through statutory children's social care where there are safeguarding concerns.
- Work with other schools in the local area, such as schools previously attended and the schools of any siblings.
- Agree a joint approach for all severely absent pupils with the local authority.
- Proactively use data to identify cohorts with, or at risk of, low attendance and develop strategies to support them.
- Work with other schools in the local area and the local authority to share effective practice where there are common barriers to attendance.
- Maintain the same ambition for attendance and work with pupils with SEND and/or medical conditions and their parents to maximise attendance.
- Ensure join up with pastoral support and where required, put in place additional support and adjustments, such as an individual healthcare plan and if applicable, ensuring the provision outlined in the pupil's EHCP is accessed.
- Consider additional support from wider services and external partners, making timely referrals for children with SEND and medical conditions.
- Regularly monitor data for children with SEND and medical conditions, including at board and governing body meetings and with local authorities.
- Inform the pupil's social worker, where there is one, if there are any unexplained absences and if the child's name is to be deleted from the register.

Kingsbury Academy requests that parents:

- Ensure their child attends every day the school is open except when a statutory reason applies.
- Notify the school as soon as possible when their child has to be unexpectedly absent (e.g. sickness).
- Only request leave of absence in exceptional circumstances and do so in advance.
- Book any medical appointments around the school day where possible.
- Work with the school and local authority to help them understand the child's barriers to attendance.
- Proactively engage with the support offered to prevent the need for more formal support.
- Proactively engage with the formal support offered – including parenting contract or voluntary early help plan to prevent the need for legal intervention.

Pupils will:

- Be aware of the school's attendance policy and when and where they are required to attend. This will be communicated to them by school staff, parents and through the school timetable.
- Communicate (Where appropriate) to their class teacher/tutor or another member of staff if they are experiencing difficulties at school or at home which may impact on their attendance.
- Bring a note of explanation from their parents or guardians to explain an absence that has happened or is foreseen.
- Follow the school procedure if they arrive late. This will help the school to monitor attendance and keep accurate records for the child's individual attendance. This is also vital for health and safety in the event of a school evacuation.

5. Recording Absence and Attendance

When marking our registers, we will apply the national codes as outlined and regulated by the Department of Education guidance to accurately record and report attendance.

5.1 Leave of absence

The headteacher/attendance lead can only authorise leave of absence in exceptional circumstances. The headteacher/attendance lead will consider each application individually taking into account the specific facts and circumstances and relevant background context behind the request. If a leave of absence is granted, the headteacher will determine the length of time the pupil can be away from school. All absences associated with a family holiday (without exceptional circumstances) during term time will be marked as unauthorised on the register. Any parents known to have removed their child from school for the sole purpose of a holiday may be referred to the Local Authority by the headteacher and be issued with a fixed penalty notice.

A penalty notice request may be submitted to the Local Authority by the headteacher should:

- The parent fails to submit a leave of absence request in advance of taking the leave.
- An application for a leave of absence is not authorised by the headteacher but is still taken.
- A longer period is taken more than the agreed number of days.

When absence is granted by the head teacher, the parent will need to agree a date of return. If a pupil fails to return on the expected date and contact is not received from, or made with the parents, school will seek advice from the Local Authority. This could result in a possible child absent from education procedure being instigated.

5.2 Medical Appointments and absence due to illness

Parents should try to make appointments outside of school hours wherever possible. Where appointments during school time are unavoidable, we ask that parent notifies the school in advance of the appointment wherever possible. The pupil should only be out of school for the minimum amount of time necessary for the appointment. In most circumstances, a child should not miss a whole day at school for an appointment. If a pupil must attend a medical appointment during the school day, they must provide evidence of appointment letter.

In most cases, absences for illness which are reported following the school's absence reporting procedures will be authorised without the need for parents to supply medical evidence unnecessarily. In line with Department for Education guidance, if we do have a genuine concern about the authenticity of the illness, we may ask the parent to provide medical evidence, such as a prescription, appointment card, or other appropriate form of evidence. If the school is not satisfied about the authenticity of the illness, the absence will be recorded as unauthorised.

5.3 Pupil Absence for the purposes of Religious Observance

Kingsbury Academy acknowledges the multi-faith nature of British society and recognises that, on some occasions, religious festivals may fall outside school holiday periods or weekends and is recognised as such by a relevant religious authority. Where this occurs, the school will consider either authorising the pupil absence or making special leave for religious observance. Parents are requested to give advance notice to the school.

5.4 Unauthorised Absence

Absence will not be authorised unless parents have provided a satisfactory explanation, and it is accepted as such by the school. The decision to authorise absences is at the discretion of the headteacher. Examples of unsatisfactory explanations include but are not limited to:

- Pupil/family members birthday
- Closure of a sibling's school for INSET (or other purposes)
- Refusal to attend school on health grounds but where the pupil is considered well enough to attend.
- Holidays taken without the authorisation of the school.

6. Our Procedures

6.1 Register Keeping and Recording

The Education, Pupil Registration (England) Regulations 2006, as amended, require schools to take an attendance register at the beginning of the morning session and once during each afternoon session. The register must record whether the pupil was:

- Present.
- Absent.
- Attending an approved educational activity or
- Unable to attend due to exceptional circumstances.

6.2 Late Arrival at School

At Kingsbury Academy all pupils are expected to arrive on time for every day of the school year. The school day begins at 8.50am. All pupils arriving after this time are required to report to the main office with their parents, who will be expected to provide a reason for their absence. It will be recorded as late - L code (Late before the close of register).

The school register will officially close at 9.30am. All pupils arriving after this time will be marked as having an unauthorised absence for the morning session - U code (Late after the close of register). This is categorised as an unauthorised absence for the session. Parents will be contacted to discuss any patterns of late arrival. Repeated arrival after the close of registration will result in appropriate interventions being instigated and may also result in a penalty notice being issued or prosecution.

Please note: L or U codes will be used if a pupil arrives after the close of the afternoon register for the PM session.

6.3 Expected absence procedure for parents

A parent has a legal responsibility to ensure that their child attends school regularly. If a child is unavoidably absent from school parents are expected to contact school by telephone call on the morning of the first day of absence and on each subsequent day, identifying the reason for absence and the expected date of return. If no contact is received, then absence protocols will be instigated.

If a child is absent, the following actions will be initiated by the school:

- The first day calling procedures will be activated for all pupils who are not in school after close of register at 9.30am and where no reason for absence is known.
- If there is still no contact made from the pupil's parents, a further telephone call home will be made again that morning. If no response can be gained, the child's named emergency contact will be telephoned.
- If school cannot contact a parent and are concerned about a pupil, a home visit may be carried out.

In certain circumstances the school may also:

- Visit the home of the pupil.
- Write to the parents of a pupil to highlight attendance or punctuality issues.
- Invite parents to discuss how school can support the family to make improvement.
- Discuss the pupil at the termly Targeted Support Meetings to seek advice and guidance on additional support strategies.
- Refer to Early Help and/or other external agencies to offer support, guidance, and advice.
- Refer to the Local Authority for joint enquiries to be made to establish the whereabouts of the child through Children Absent Education procedures.
- Refer to the Local Authority to consider issuing a penalty notice or to consider prosecution when all other interventions have failed, or an unauthorised leave of absence has been taken.

6.4 Rewards and Interventions

Kingsbury Academy has an ambitious whole school attendance target of 95%. Attendance is monitored daily but summarised on a half termly basis by the attendance lead and shared with SLT and Governors. Parents are informed of attendance data on a termly basis via the school newsletter (Individual pupils not identified) Pupils' with <95% attendance, are celebrated within assemblies and certificates presented to pupils. The class with the highest attendance over the term will have a celebration activity that is appropriate to the learner need within that class. For targeted pupils/families, individual incentives will be identified for improved attendance.

Parents will be initially informed of attendance concerns through a telephone call with the Attendance or Welfare lead. Ongoing concerns will be addressed in writing and the school will request parents to attend an attendance meeting to discuss barriers to attendance and identify necessary support for families.

Stage 1: Prevention

Criteria: Attendance is between 91% and 100%

Pupils who have attendance between 91% and 100% will receive support from school and other universal services they may be accessing i.e., GP

Stage 2: Early Intervention

Criteria: Attendance is between 81% and 90%

Pupils who have attendance between 81% and 90% may require support from other services outside of school and universal services at stage 1.

Stage 3: Targeted Support

Criteria: Attendance is below 80%

Pupils who have attendance below 80% may require multi-agency support in addition to that provided at stage 2.

7. Tailored Support

At Kingsbury Academy we recognise that poor attendance can be an indication of difficulties in a family's life. This may be related to problems at home and or in school. Parents are encouraged to inform school of any difficulties or changes in circumstances that may affect their child's attendance and or behaviour in school, for example, bereavement, divorce/separation, emerging health concerns. This will help the school identify any additional support that may be required.

We also recognise that some pupils are more likely to require additional support to attain good attendance. The school will implement a range of strategies to support improved attendance based on the individual needs and circumstances of the child.

Strategies we may use to support you include:

- School based support – e.g. support in implementing routines and structures.
- OT/SaLT interventions
- Early Help
- RISE referral (Well-being)
- Multi-Agency working for specific issues e.g. Medical conditions

To plan the correct support, we will always invite parents (and pupils where appropriate) to attend a meeting to discuss the concerns and devise a plan to support the child's regular attendance. Support offered will be child centred and planned in discussion and agreement with both parents and pupils (where appropriate). This may include a referral to Early Help or a Parenting Contract.

8. Persistent Absence and the use of legal interventions

A pupil becomes a 'persistent absentee' (PA) when their attendance drops to 90% and below for any reason. Over a full academic year this would be 40 sessions (20 days). Absence at this level is having an impact on pupil outcomes.

The attendance of all pupils at our school is monitored to identify children who are PA, or are on track to becoming PA. Where emerging concerns are identified we will instigate appropriate and timely interventions as outlined in the section above. Referrals may also be made to external agencies for targeted support.

If parents fail to engage with support and their child continues to have unsatisfactory attendance/ punctuality, a request may be made to the Local Authority to pursue legal proceedings either through a penalty notice or prosecution in the Magistrates' Court.

Parents found guilty in a Magistrates' Court of failing to secure their child's regular attendance at school under the provisions of the Education Act 1996, will receive a criminal record and a maximum penalty of a £1000 fine under a Section 444 (1) offence or a £2500 fine or up to a 3-month prison sentence, under a Section 444 (1a) offence.

8.1 Fixed Penalty Notices

Fixed penalty notices may be issued by the Head teacher to parents or carers if your children are absent from school for the following reasons:

- Holiday / leave of absence during term time
- Irregular attendance including persistent late arrival to school (after registration has closed) which equates to 10 or more sessions within a current 5-week period.

Penalty Notices will issued, by post to your home address to each parent or carer by the local authority at the request of the Headteacher. The Penalty Notice is:

- £60 for each of your children if paid in full within 21 days
- £120 if paid in full after 21 days but within 28 days.

9. Staged Reintegration/Reduced timetables

All children of compulsory school age are legally entitled to receive a suitable full-time education and the school and local authority have a statutory duty to ensure that all children in the area receive such an education. In very exceptional circumstances, we may decide to implement a temporary, reduced timetable to meet a pupil's individual needs and only where it is safe to do so.

We will not use a reduced timetable to manage a pupil's behaviour. A reduced timetable will not be treated as a long-term solution and will have a time limit by which point the pupil is expected to attend full-time or be provided with alternative provision where applicable. We will never put a reduced timetable in place without agreement from parent/carer and/or other professionals working with the family as appropriate. This intervention will only be used as part of a comprehensive package of support for the pupil; it will be reviewed regularly in partnership with the child, parent and any other relevant professionals working with the family.

We will notify the Attendance and Children Absent from Education Team of all reduced timetables as soon as a plan has been agreed.

10. Related Policies

To underpin the values and ethos of our school and our intent to ensure that pupils at our school attend school regularly and reach their full potential the following policies are integral to this approach:

- Safeguarding including Child Protection
- Medical needs
- Admissions
- Anti-bullying
- Exclusion
- Special Educational Needs

11. Statutory Framework

This policy has been devised in accordance with the following legislation and guidance:

- [Working together to improve school attendance, DfE, \(September 2023\)](#)
- [School attendance parental responsibility measures, DfE \(May 2020\)](#)
- [Keeping children safe in education, DfE \(September 2023\)](#)
- [Working together to safeguard children, DfE \(July 2022\)](#)

12. Appendices

The following documents are relevant to this policy.

- Leave in Term Time Request Form
- Attendance Letter of concern
- Attendance Procedure Flow Chart

13. Changes

Description	Date	Page	Section
Re-formatted – New Policy	September 2023	Whole document	Whole document